

WAAS CH <b>42799</b> <b>W04A</b>	APP CRS <b>042°</b>	Rwy Idg <b>5981</b> TDZE <b>624</b> Apt Elev <b>630</b>
--	------------------------	---

# RNAV (GPS) RWY 4

## GREATER KANKAKEE (IKK)

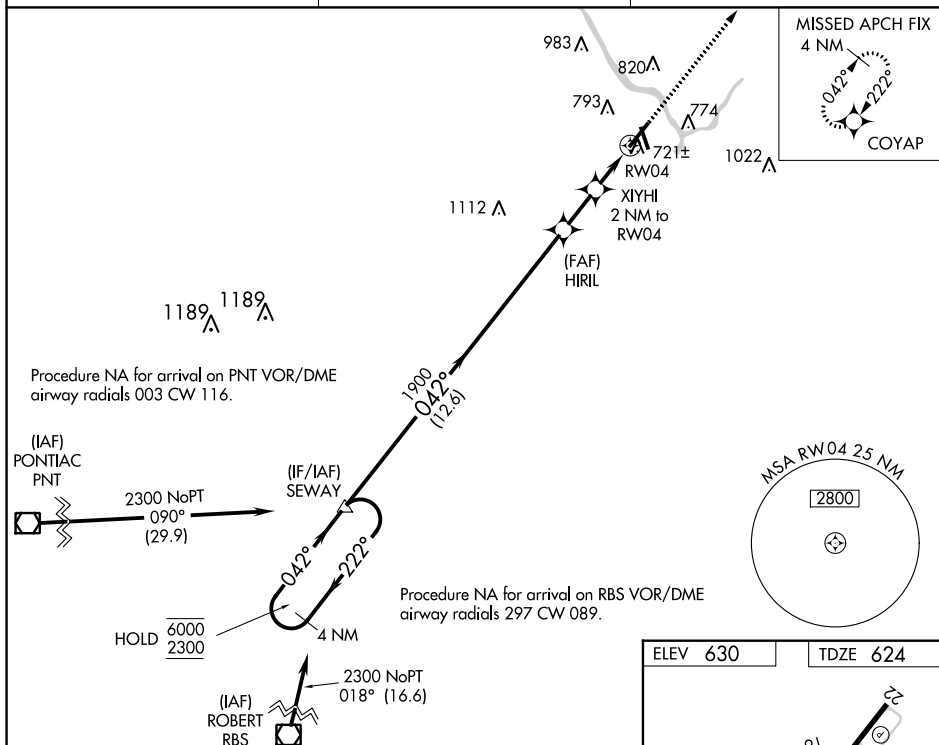
RNP APCH.

**T** Circling Rwy 16, 34 NA at night. For uncompensated Baro-VNAV systems, LNAV/VNAV NA below -16°C or above 54°C. For inop ALS, increase **A** LNAV/VNAV all Cats visibility to 7/8 SM and LNAV Cats C/D visibility to 1 SM.

MALSR

**MISSED APPROACH:** Climb to 2300 direct COYAP and hold.

AWOS-3 <b>128.475</b>	CHICAGO CENTER <b>132.5 284.7</b>	UNICOM <b>123.0 (CTAF) 0</b>
--------------------------	--------------------------------------	---------------------------------

[illegible]