

WAAS CH <b>42740</b> <b>W32A</b>	APP CRS <b>319°</b>	Rwy Idg <b>4599</b> TDZE <b>821</b> Apt Elev <b>826</b>
--	------------------------	---

RNAV (GPS) RWY 32  
CLINTONVILLE MUNI (CLI)

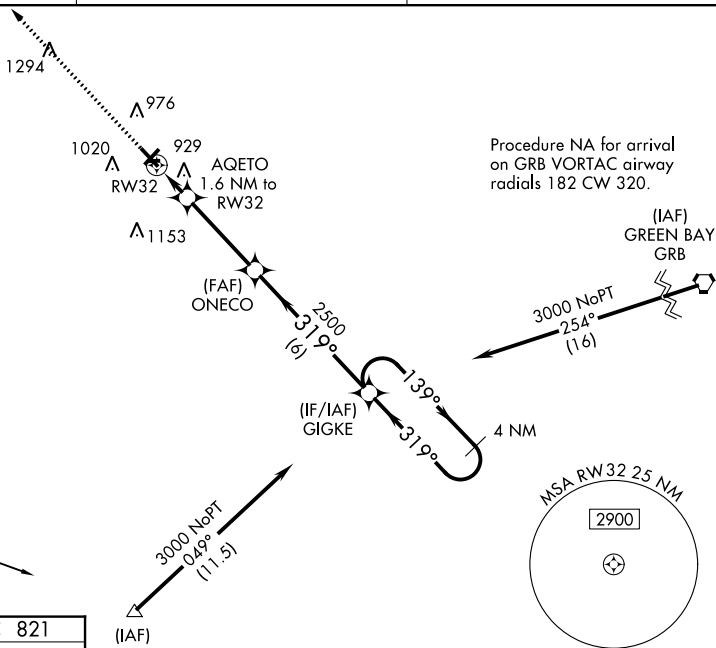
RNP APCH.

**T** For uncompensated Baro-VNAV systems, LNAV/VNAV NA below -16°C or above 54°C. Rwy 32 helicopter visibility reduction below 3/4 SM NA. Circling Rwy 14 NA at night. Circling NA to Rwy 9 and 27.

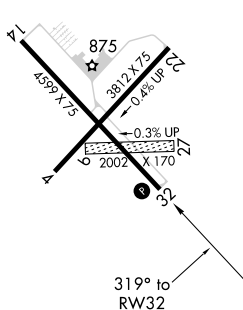
**MISSED APPROACH:**  
Climb to 3000 direct  
ICSI and hold.

AWOS-3 <b>120.675</b>	GREEN BAY APP CON ★ <b>126.3 338.2</b>	UNICOM <b>122.8</b> (CTAF) <b>0</b>
--------------------------	---	--

MISSED APCH FIX



ELEV 826		TDZE 821
----------	--	----------

REIL Rwy 32 **L**  
MIRL Rwy 4-23 and 14-33 **L**

CLINTONVILLE, WISCONSIN

Amdt 2A 07NOV19

44°37'N-88°44'W

CLINTONVILLE MUNI (CLI)

RNAV (GPS) RWY 32