

| | | |
|----------------------------------------|------------------------|---------------------------------------------------------------|
| WAAS CH 63033 W17A | APP CRS 169° | Rwy Idg 3398 TDZE 455 Apt Elev 461 |
|----------------------------------------|------------------------|---------------------------------------------------------------|

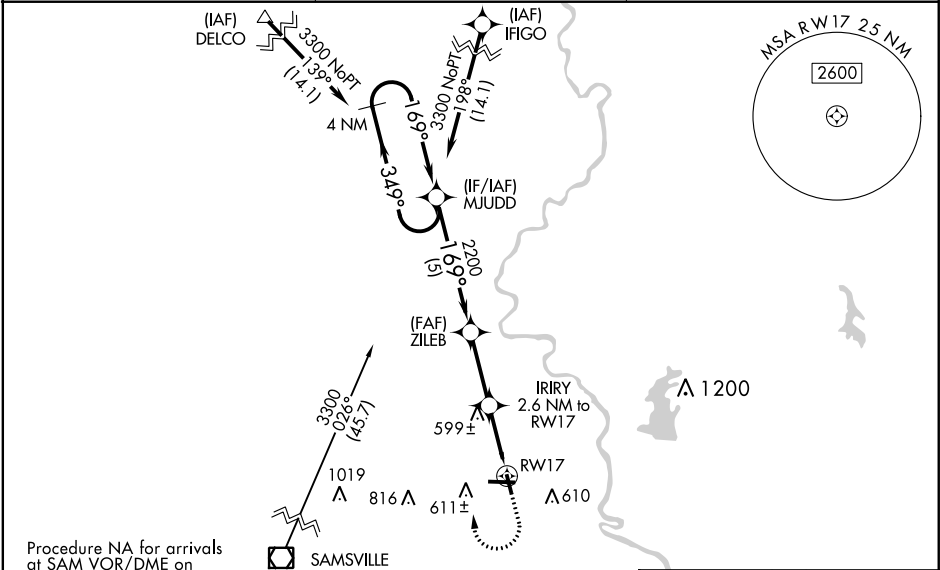
RNAV (GPS) RWY 17

CRAWFORD CO (RSV)

▼ Baro-VNAV NA when using Terre Haute Rgnl altimeter setting. For uncompensated Baro-VNAV systems, LNAV/VNAV NA below -15°C (5°F) or above 54°C (130°F). DME/DME RNP-0.3 NA. When local altimeter setting not received, use Terre Haute Rgnl altimeter setting and increase all DA 89 feet and all MDA 100 feet; increase LPV all Cats visibility ¼ mile, increase LNAV/VNAV all Cats visibility ⅓ mile, increase LNAV Cat C visibility ¼ mile and increase Circling Cat C visibility ½ mile. Rwy 17 Straight-in and Circling minimums NA at night. Helicopter visibility reduction below 1 SM NA.

MISSED APPROACH: Climb to 3000 then climbing right turn to 3300 direct MJUDD and hold.

| | | |
|-------------------------|---------------------------------------|---------------------------------|
| AWOS-3 120.50 | HULMAN APP CON 119.25 339.8 | UNICOM 123.0 (CTAF) 0 |
|-------------------------|---------------------------------------|---------------------------------|



| | | | |
|----------|--|----------|--|
| ELEV 461 | | TDZE 455 | |
|----------|--|----------|--|

4 NM Holding Pattern MJUDD

3300 ← 349° 169° →

GP 3.00° TCH 51

MJUDD

ZILEB 2200

IRIY 2.6 NM to RW17

RW17

*1320

5 NM 2.7 NM 2.6 NM

*LNAV only.

| CATEGORY | A | B | C | D |
|--------------|---------------------|--------------------|----------------------|----|
| LPV DA | 734-1 279 (300-1) | | | NA |
| LNAV/VNAV DA | 812-1½ 357 (400-1½) | | | NA |
| LNAV MDA | 860-1 | 405 (400-1) | 860-1½ 405 (400-1½) | NA |
| CIRCLING | 940-1 479 (500-1) | 1080-1 619 (700-1) | 1120-1¾ 659 (700-1¾) | NA |

REIL Rwy 17, 9 and 27 0

MIRL Rwy 9-27 and 17-35 0