

LOC RWY 1
BARABOO-WISCONSIN DELLS RGNL (DLL)

T Circling NA to Rwy 14 and 32.
A NA Rwy 1 helicopter visibility reduction below $\frac{3}{4}$ SM NA.

MISSED APPROACH: Climb to 4000 direct DLL VORTAC and hold, continue climb-in-hold to 4000.

AWOS-3 118.325	MADISON APP CON ★ 135.45 343.7	UNICOM 123.05(CTAF) 0
--------------------------	--	---------------------------------

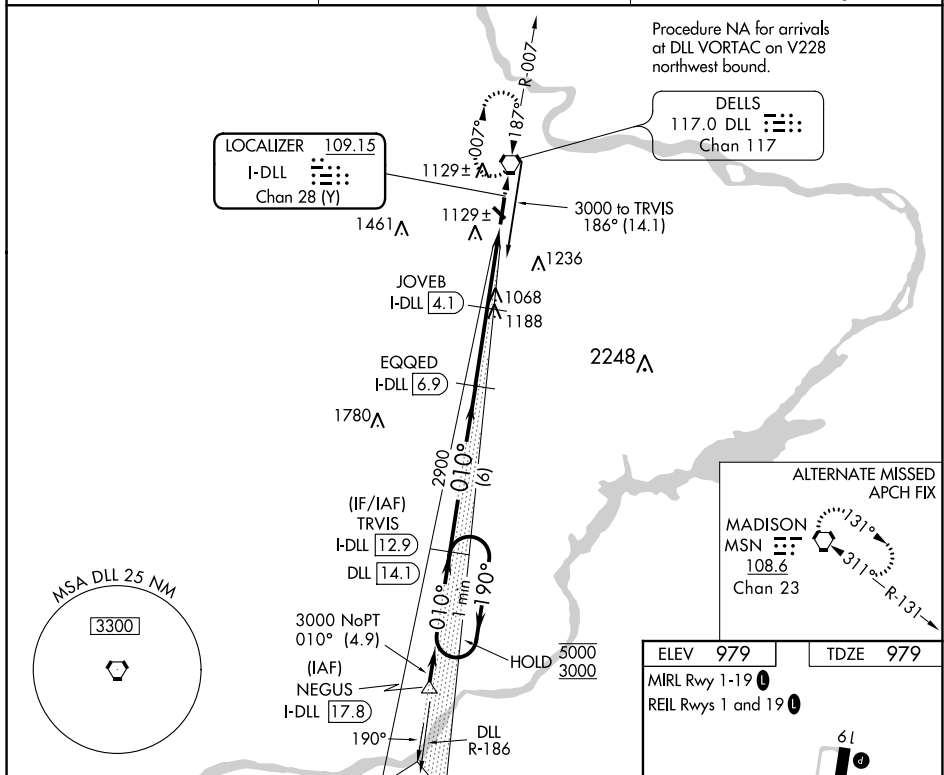


Diagram illustrating a step climb procedure for a 4000 ft step climb. The diagram shows a profile with a 3.00° climb angle and a 3.00° descent angle. Key points include TRVIS (I-DLL 12.9), EQQED (I-DLL 6.9), JOVEB (I-DLL 4.1), and a final I-DLL 1.2 NM. Altitudes are 5000, 3000, 2900, and 2000 feet. A table below the diagram shows the step climb procedure details.

CATEGORY	A	B	C	D
S-1	1380-1	401 (500-1)	1380-1 $\frac{1}{8}$ 401 (500-1 $\frac{1}{8}$)	NA
C CIRCLING	1520-1	541 (600-1)	1580-1 $\frac{3}{4}$ 601 (700-1 $\frac{3}{4}$)	NA

