

WAAS
CH **53304**
W01A

APP CRS
010°

Rwy Idg **5010**
TDZE **979**
Apt Elev **979**

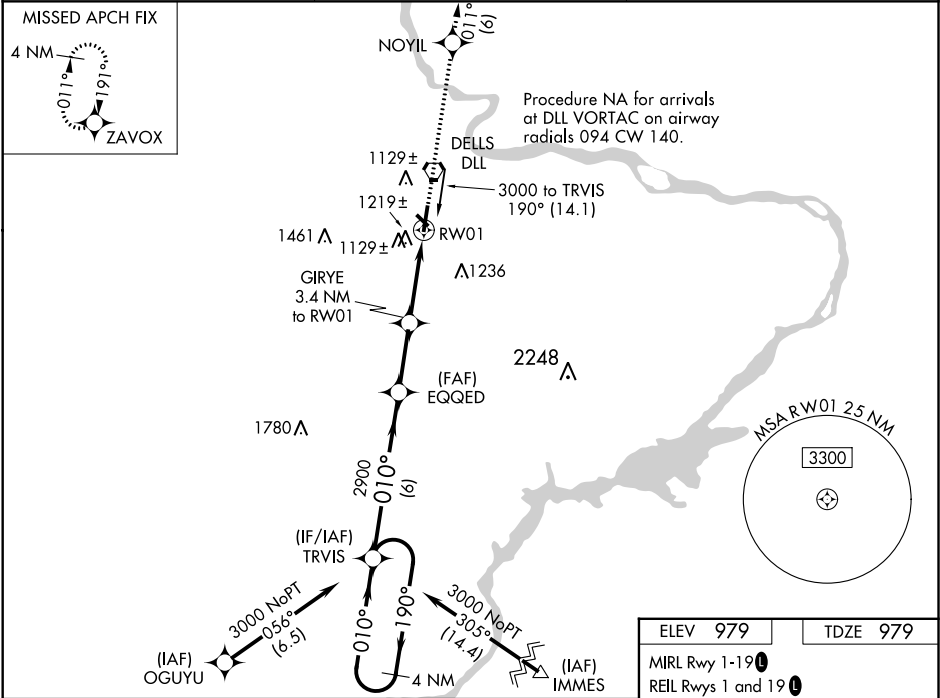
RNAV (GPS) RWY 1

BARABOO-WISCONSIN DELLS RGNL (DLL)

▼ Baro-VNAV NA when using Lone Rock altimeter setting. For uncompensated Baro-VNAV systems, LNAV/VNAV NA below -22°C (-7°F) or above 54°C (130°F). DME/DME RNP-0.3 NA. When local altimeter setting not received, use Lone Rock altimeter setting and increase all DA 97 feet/MDA 100 feet. Increase LPV all Cats visibility ½ mile, LNAV/VNAV all Cats visibility ¾ mile, LNAV Cat C visibility ¾ mile, and Circling Cat C visibility ½ mile. Circling NA to Rwy 14-32. Rwy 1 helicopter visibility reduction below ¾ SM NA.

MISSED APPROACH: Climb to 3000 direct NOYIL and on track 011° to ZAVOX and hold.

AWOS-3 118.325	MADISON APP CON★ 135.45 343.7	UNICOM 123.05 (CTAF)
--------------------------	---	--------------------------------



ELEV 979	TDZE 979
MIRL Rwy 1-19	REIL Rws 1 and 19

