

VORTAC DLL 117.0 Chan 117	APP CRS 187°	Rwy Idg TDZE Apt Elev	N/A N/A 979
---	------------------------	-----------------------------	--

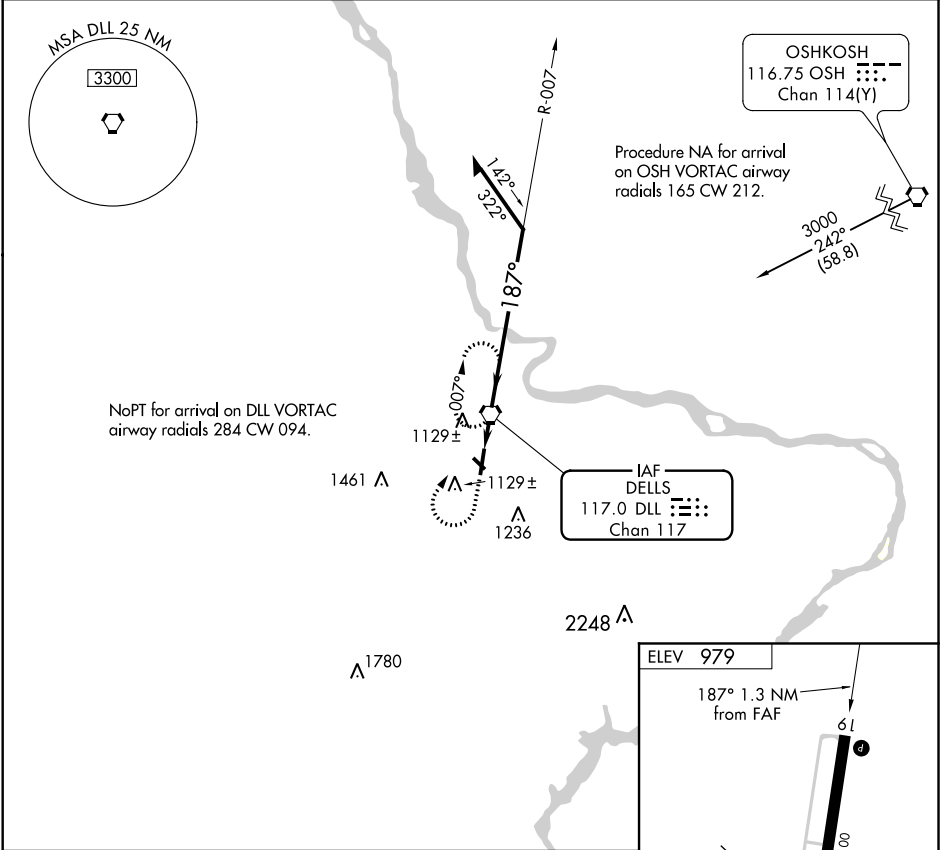
VOR-A

BARABOO-WISCONSIN DELLS RGNL (DLL)

Circling NA to Rwy 14 and 32.

MISSED APPROACH: Climb to 2500 then climbing right turn to 3300 direct DLL VORTAC and hold, continue climb-in-hold to 3300.

AWOS-3 118.325	MADISON APP CON ★ 135.45 343.7	UNICOM 123.05(CTAF) 0
--------------------------	--	---------------------------------



2500

3300

DLL

DLL 1.3

1.3 NM

DLL VORTAC

007°

187°

3000

2100

Remain within 10 NM

CATEGORY	A	B	C	D
CIRCLING	1520-1	541 (600-1)	1580-1¾ 601 (700-1¾)	NA

ELEV 979

187° 1.3 NM from FAF

61

5010 X 100

2745 X 100

MIRL Rwy 1-19 0

REIL Rwy 1 and 19 0

FAF to MAP 1.3 NM					
Knots	60	90	120	150	180
Min:Sec	1:18	0:52	0:39	0:31	0:26