

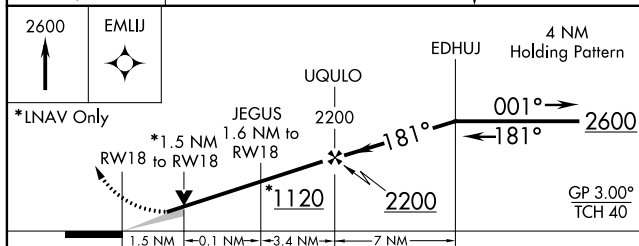
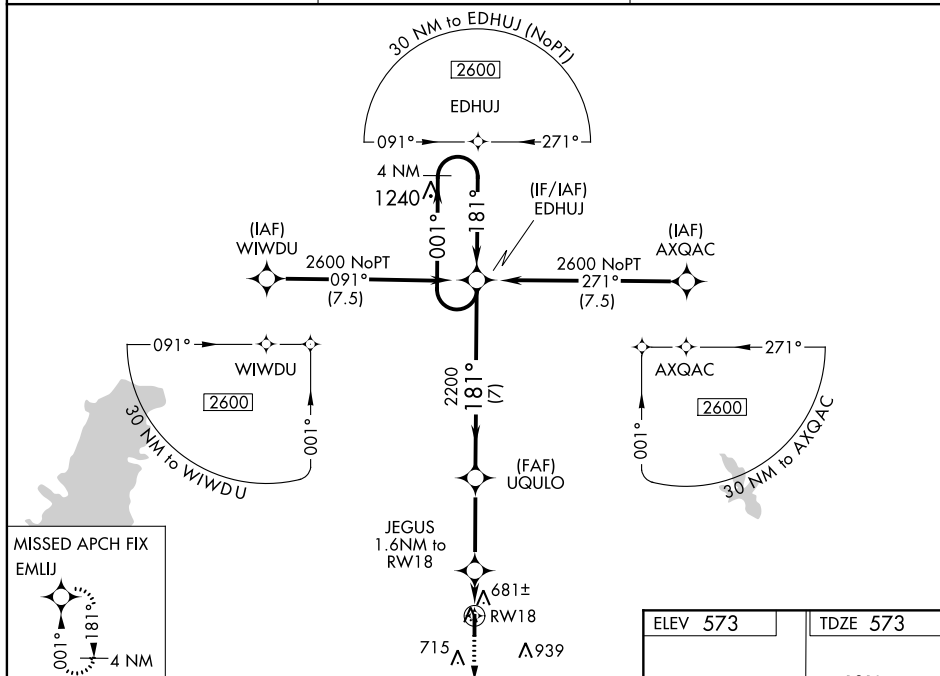
WAAS CH 78032 W18A	APP CRS 181°	Rwy Idg 4098 TDZE 573 Apt Elev 573
----------------------------------------	------------------------	---------------------------------------------------------------

RNAV (GPS) RWY 18
SALEM-LECKRONE (SLO)

⚠ Baro-VNAV NA when using Centralia altimeter setting. For uncompensated Baro-VNAV systems, LNAV/VNAV NA below -21°C (-5°F) or above 54°C (130°F). When local altimeter setting not received, use Centralia altimeter setting and increase all DA 28 feet and all MDA 40 feet; increase LNAV/VNAV all C/Ds visibility ½ mile, LNAV Cats C/D visibility ½ mile, Circling Cat D visibility ¼ mile. DME/DME RNP-0.3 NA.

MISSED APPROACH:
Climb to 2600 direct
EMLJ and hold.

AWOS-3 118.525	KANSAS CITY CENTER 127.7 351.825	UNICOM 122.8 (CTAF) 0
--------------------------	--------------------------------------------	----------------------------------------



CATEGORY		A	B	C	D
LPV	DA	773-1		200 (200-1)	
LNAV/ VNAV	DA	862-1		289 (300-1)	
LNAV	MDA	940-1		367 (400-1)	
CIRCLING		1040-1	467 (500-1)	1040-1½ 467 (500-1½)	1240-2 667 (700-2)

