

WAAS CH 58101 W34A	APP CRS 339°	Rwy Idg 5002 TDZE 1258 Apt Elev 1278
--	------------------------	---

RNAV (GPS) RWY 34

MARSHFIELD MUNI (MFI)

▼

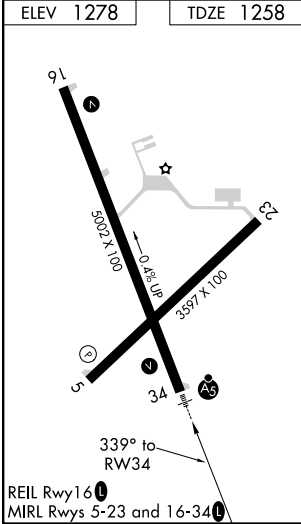
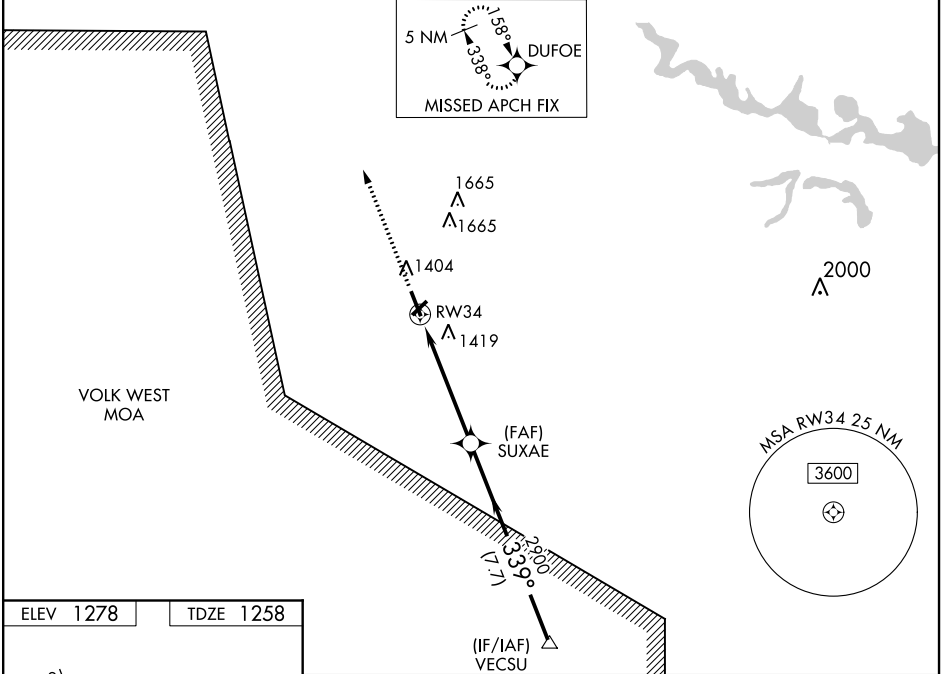
▲

For inoperative MALSRS increase LPV all Cats visibility to 1, increase LNAV Cats A and B to 1 and Cat D to 1¼. If local altimeter setting not received, use Central Wisconsin altimeter setting and increase all DAs/MDAs 60 feet. VDP and Baro-VNAV NA when using Central Wisconsin altimeter setting. For uncompensated Baro-VNAV systems, LNAV/VNAV NA below -17° C (2° F) or above 46° C (115° F). DME/DME RNP-0.3 NA.

MALSRS

MISSED APPROACH: Climb to 3000 direct DUFOE and hold.

ASOS 121.575	MINNEAPOLIS CENTER 124.4 317.7	UNICOM 123.0 (CTAF) 0
------------------------	--	---------------------------------



3000	DUFOE	SUXAE	VECSU	Procedure Turn NA
*LNAV only	*1.2 NM to RW34	2900	2900	GP 3.00° TCH 42
1.2	3.8 NM	7.7 NM		
CATEGORY	A	B	C	D
LPV DA	1508-¾ 250 (300-¾)			
LNAV/VNAV DA	1718-1¼ 460 (500-1¼)			
LNAV MDA	1680-¾ 422 (500-¾)			1680-1 422 (500-1)
CIRCLING	1760-1¾ 482 (500-1¾)		2020-2¼ 742 (800-2¼)	2020-2½ 742 (800-2½)

EC-3, 31 DEC 2020 to 28 JAN 2021

EC-3, 31 DEC 2020 to 28 JAN 2021