

WAAS
CH **57910**
W25A

APP CRS
252°

Rwy Idg
TDZE
Apt Elev

6499
647
648

RNAV (GPS) RWY 25

WHITESIDE COUNTY AIRPORT-JOSEPH H BITTORF FIELD (SQI)

For uncompensated Baro-VNAV systems, LNAV/VNAV NA below -16°C (4°F) or above 54°C (130°F). Circling Rwy 36 NA at night.
DME/DME RNP-0.3 NA.

MALSR

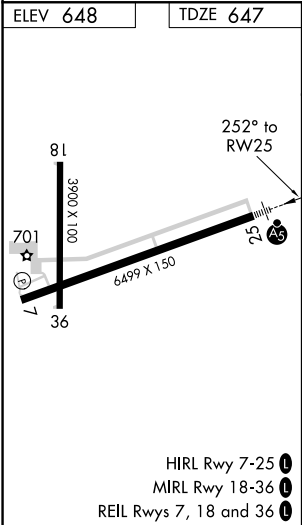
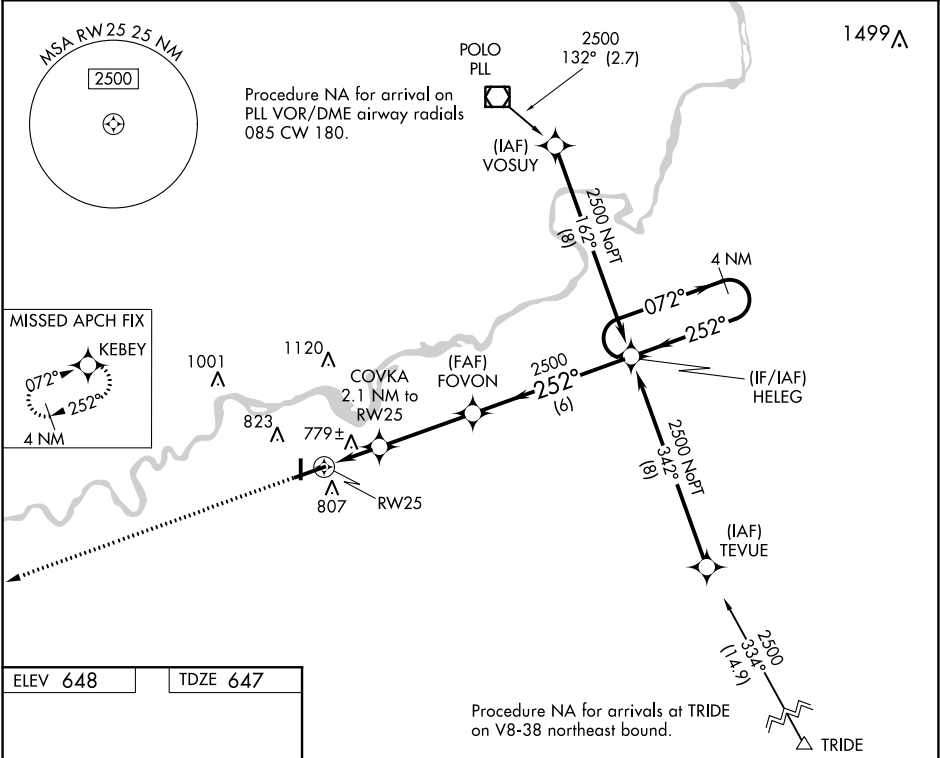
MISSED APPROACH: Climb to 2700 direct KEBEY and hold.

AWOS-3PT
119.175

ROCKFORD APP CON
126.0 327.0

CLNC DEL
128.0

UNICOM
123.0 (CTAF) 0



2700	KEBEY	4 NM Holding Pattern			
* LNAV only.		COVKA 2.1 NM to RW25	FOVON 2500	HELEG	2500
		* 1.1 NM to RW25	252°	252°	GP 3.00° TCH 54
		RW25	* 1360	2500	
		1.1 NM	1 NM	3.6 NM	6 NM
CATEGORY	A	B	C	D	
LPV DA	847-1/2 200 (200-1/2)				
LNAV/VNAV DA	1047-7/8 400 (400-7/8)				
LNAV MDA	1040-1/2 393 (400-1/2)		1040-5/8 393 (400-5/8)		
CIRCLING	1140-1 492 (500-1)		1160-1 1/2 512 (600-1 1/2)		1480-2 3/4 832 (900-2 3/4)