

APP CRS	Rwy Idg	6499
072°	TDZE	648
	Apt Elev	648

RNAV (GPS) RWY 7

WHITESIDE COUNTY AIRPORT-JOSEPH H BITTORF FIELD (SQI)

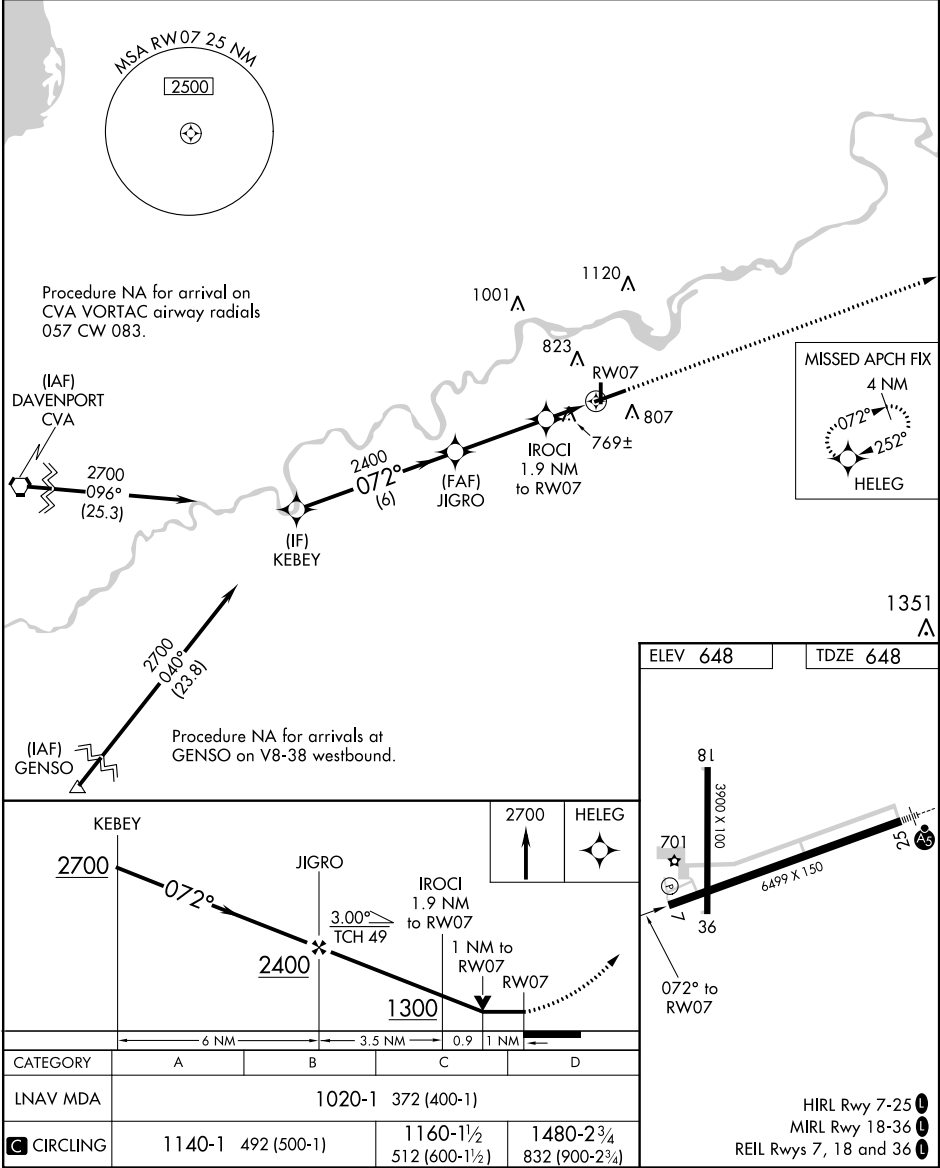
⚠

⚠

Circling Rwy 36 NA at night.  
Rwy 7 helicopter visibility reduction below  $\frac{3}{4}$  SM NA.  
DME/DME RNP-0.3 NA.

MISSED APPROACH: Climb to 2700 direct HELEG and hold.

AWOS-3PT 119.175	ROCKFORD APP CON 126.0 327.0	CLNC DEL 128.0	UNICOM 123.0 (CTAF) 0
---------------------	---------------------------------	-------------------	--------------------------



EC-3, 31 DEC 2020 to 28 JAN 2021

EC-3, 31 DEC 2020 to 28 JAN 2021