

LOC/DME I-HTY	APP CRS	Rwy ldg	5002
108.5	205°	TDZE	1216
Chan 22		Apt Elev	1216

ILS or LOC RWY 21

SAWYER COUNTY (HYR)

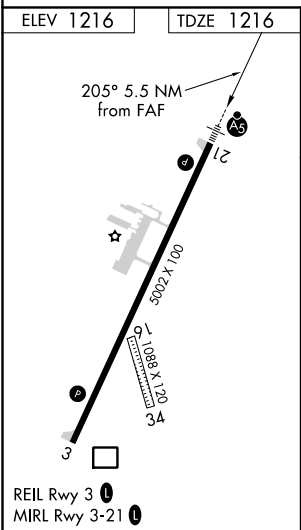
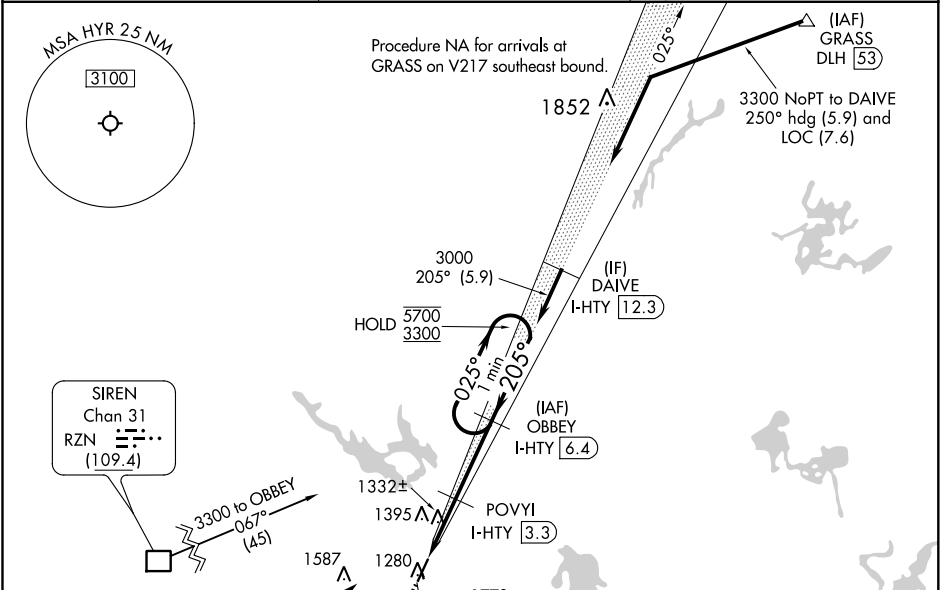
From RZN DME: RNAV 1-GPS required.
DME required.



MISSED APPROACH: Climb to 2200 then climbing right turn to 3300 on heading 060° and I-HTY northeast course to OBBEY/ I-HTY 6.4 DME and hold.

NA Circling NA to Rws 16 and 34. Rwy 21 helicopter visibility reduction below ¾ SM NA. For inop ALS, increase S-ILS 21 all Cts visibility to ½ SM, increase LOC Cat A/B visibility to 1 SM, Cat C/D to 1½ SM.

ASOS 118.4	MINNEAPOLIS CENTER 126.45 276.4	UNICOM 122.8 (CTAF) 0
---------------	------------------------------------	--------------------------



2200	3300	I-HTY NE crs	OBBEY I-HTY 6.4	OBBEY I-HTY 6.4	One Minute Holding Pattern
↑	hdg 060°				
*LOC only.	*I-HTY I-HTY 0.9	POVYI I-HTY 3.3	OBBEY I-HTY 6.4	3000	025° → 5700 ← 205° 3300
					GS 3.00° TCH 42
	1.1 NM	1.3 NM	3.1 NM		
CATEGORY	A	B	C	D	
S-ILS 21		1518-¾	302 (400-¾)		
S-LOC 21		1600-¾	384 (400-¾)		
CIRCLING	1860-1 644 (700-1)	2060-1¼ 844 (900-1¼)	2120-2¾ 904 (1000-2¾)	2120-3 904 (1000-3)	