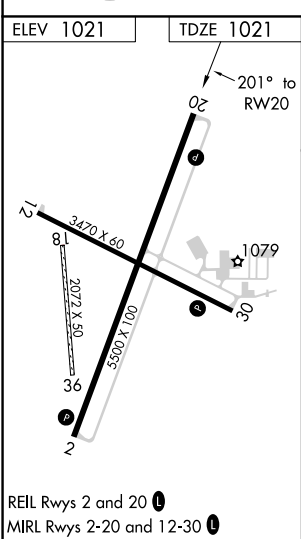
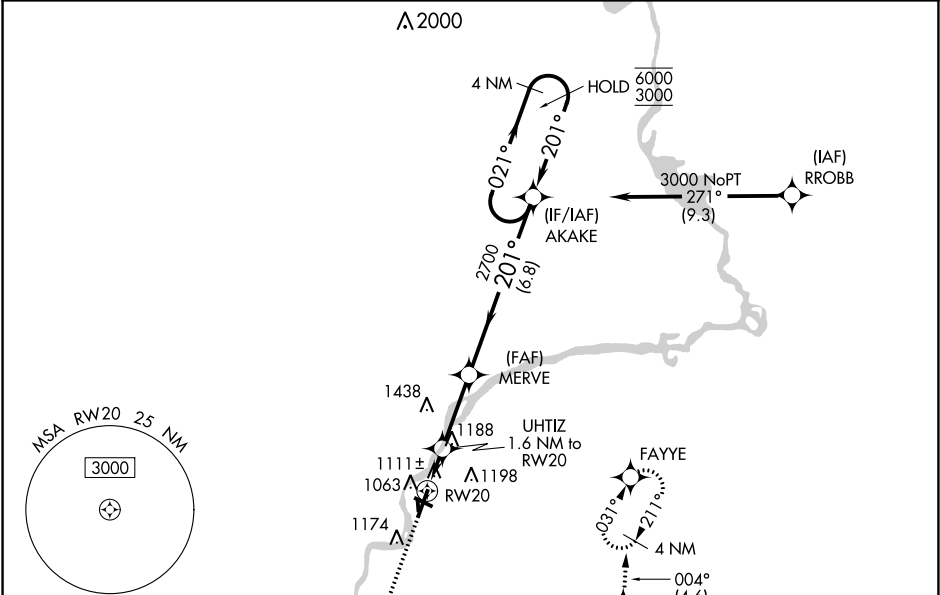


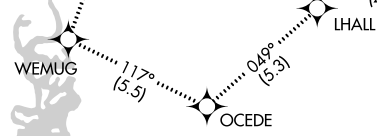
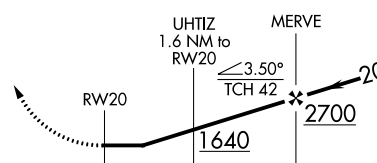
APP CRS	Rwy Idg	5500
201°	TDZE	1021
	Apt Elev	1021

RNAV (GPS) RWY 20  
ALEXANDER FIELD SOUTH WOOD COUNTY (ISW)

RNP APCH.	MISSED APPROACH: Climb to 3000 direct WEMUG and on track 117° to OCEDE and on track 049° to LHALL and on track 004° to FAYYE and hold.
⚠ Circling NA to Rwy 18 and 36. Rwy 20 helicopter visibility reduction below 1 SM NA. Straight-in Rwy 20 NA at night, Circling Rwy 20, 30 NA at night.	

ASOS 126.575	MINNEAPOLIS CENTER 124.4 317.7	UNICOM 122.8 (CTAF) 0
-----------------	-----------------------------------	--------------------------



								
3000	WEMUG	tr 117°	OCEDE	tr 049°	LHALL	tr 004°	FAYYE	4 NM Holding Pattern
								
CATEGORY A B C D								
LNAV MDA 1380-1 359 (400-1)								
CIRCLING 1480-1 459 (500-1) 1560-1 539 (600-1) 1620-1½ 599 (600-1½) 1800-2½ 779 (800-2½)								