

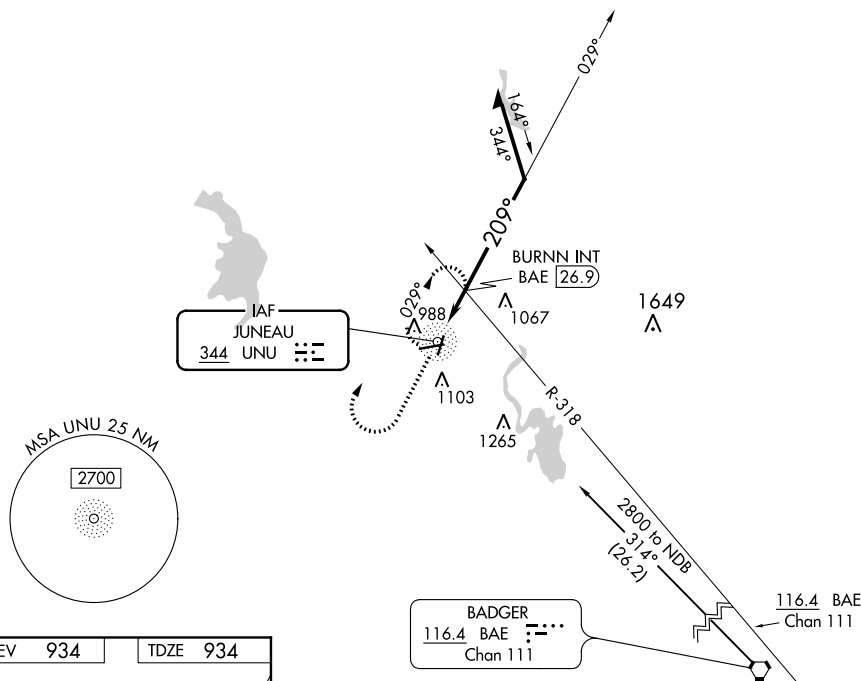
NDB UNU <u>344</u>	APP CRS 209°	Rwy Idg TDZE Apt Elev	4028 934 934
------------------------------	------------------------	-----------------------------	---

NDB RWY 20
DODGE COUNTY(UNU)

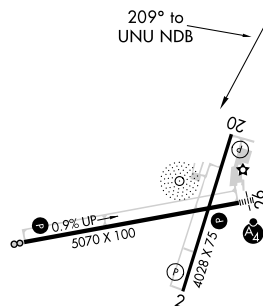
T If local altimeter setting not received, use Dane County Rgnl-Truax
A Field altimeter setting and increase all MDAs 100 feet.
 Visibility reduction by helicopters NA.

MISSED APPROACH: Climb to 2000 then climbing right turn to 2700 direct UNU NDB and hold.

AWOS-3 120.825	MADISON APP CON 119.15 343.7	UNICOM 122.7 (CTAF) 0
--------------------------	--	---------------------------------



ELEV	934	TDZE	934
------	-----	------	-----



REIL Rwys 2, 8, and 20 **L**
MIRL Rwys 8-26 and 2-20 **L**

*1640 when using Dane County Rgnl-Truax Field altimeter setting.