

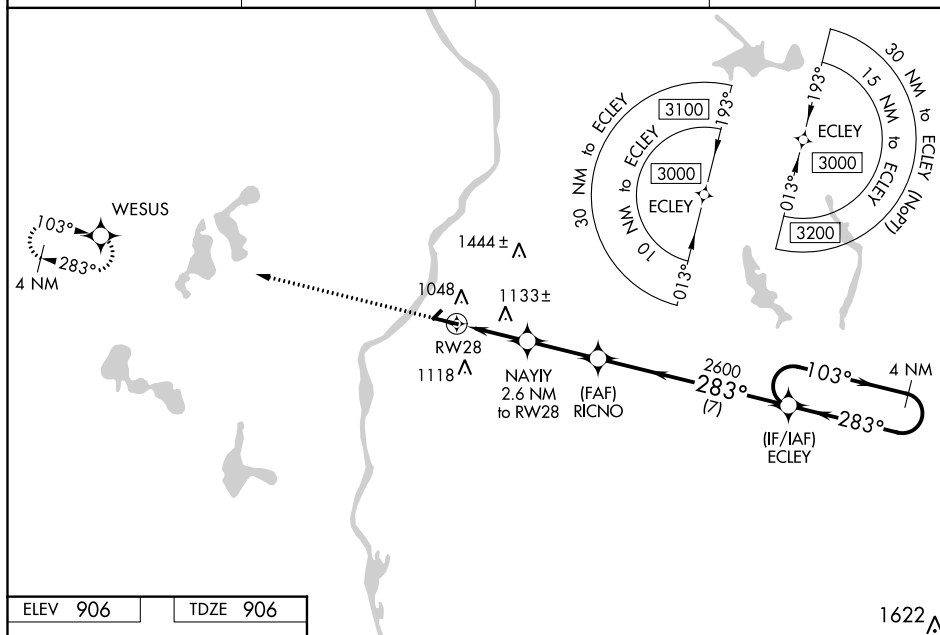
WAAS CH 97731 W28A	APP CRS 283°	Rwy Idg 5006 TDZE 906 Apt Elev 906
--	------------------------	---

RNAV (GPS) RWY 28
LO SIMENSTAD MUNI (OEO)

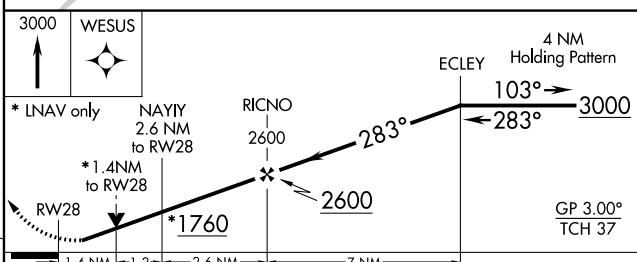
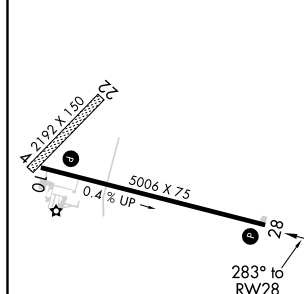
T For uncompensated Baro-VNAV systems, LNAV/VNAV NA below -16°C (4°F) or above 54°C (130°F).
A DME/DME RNP-0.3 NA. VDP and Baro-VNAV NA when using Anoka County-Blaine (Janes Field) altimeter setting. Helicopter visibility reduction below ¾ SM NA.
 When local altimeter setting not received, use Anoka County-Blaine (Janes Field) altimeter setting and increase all DA 57 feet and all MDA 60 feet. Increase LPV all Cats visibility ½ mile, LNAV/VNAV all Cats, LNAV Cat C and Circling Cat C visibility ¼ mile.

MISSED APPROACH:
Climb to 3000 direct
WESUS and hold.

AWOS-3 119.925	MINNEAPOLIS APP CON 121.2 335.65	GCO 121.725	CTAF 122.90
--------------------------	--	-----------------------	-----------------------



ELEV 906	TDZE 906
----------	----------



CATEGORY		A		B		C		D	
LPV	DA	1106- ³ / ₄		200 (200- ³ / ₄)				NA	
LNAV/ VNAV	DA	1179- ⁷ / ₈		273 (300- ⁷ / ₈)				NA	
LNAV	MDA	1400-1 494 (500-1)		1400-1 ³ / ₈ 494 (500-1 ³ / ₈)				NA	
C CIRCLING		1400-1 494 (500-1)		1500-1 594 (600-1)		1520-1 ³ / ₄ 614 (700-1 ³ / ₄)		NA	