

ILS or LOC RWY 24
ALBERTUS(FEP)

MISSED APPROACH: Climb to 1400 then climbing right turn to 2600 via JVL VOR/DME R-221 to ADOSE INT/I-PJE 12.5 DME and hold.

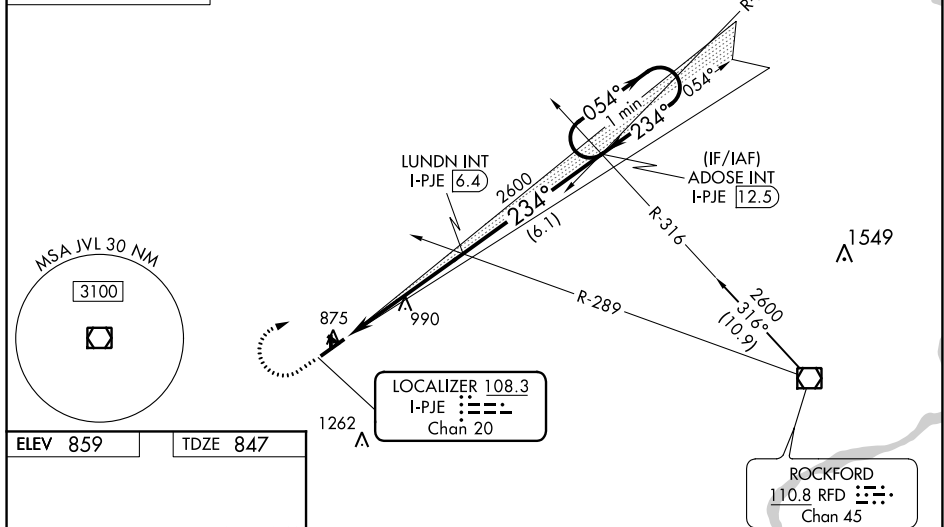
ALTERNATE
MISSED APCH FIX

R-278 278° 098°

ROCKFORD
110.8 RFD Chan 45

IAF
JANESVILLE
114.3 JVL : : : :
Chn 90

Procedure NA for arrival on
JVL VOR/DME airway radials
147 CW 278.



CATEGORY	A	B	C	D
S-ILS 24	1047-½ 200 (200-½)			
S-LOC 24	1300-½	453 (500-½)	1300-⅞	453 (500-⅞)
CIRCLING	1300-1 441 (500-1)	1340-1 481 (500-1)	1380-1½ 521 (600-1½)	1440-2 581 (600-2)

EC-3, 31 DEC 2020 to 28 JAN 2021