

WAAS
CH **78403**
W24A

APP CRS
234°

Rwy Idg
TDZE **847**
Apt Elev **859**

RNAV (GPS) RWY 24

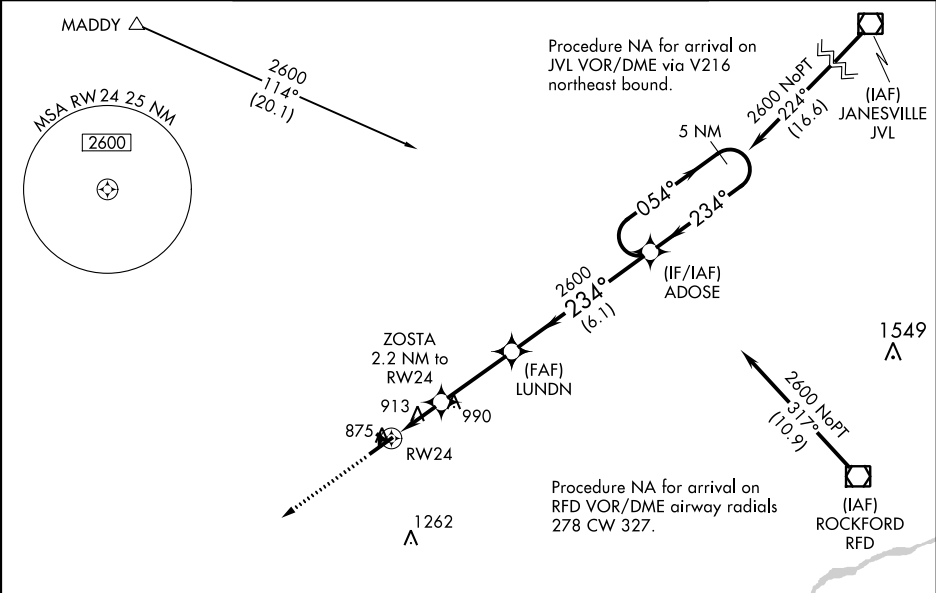
ALBERTUS (F'EP)

▼ When local altimeter setting not received, use Rockford altimeter setting; increase LPV and LNAV/VNAV DA to 1164 feet and all visibilities ½ mile; increase all MDA 80 feet and LNAV Cat C/D and Circling Cat C visibility ¼ mile. DME/DME RNP-0.3 NA. For uncompensated Baro-VNAV systems, LNAV/VNAV NA below -16° C (4° F) or above 47° C (116° F). Baro-VNAV and VDP NA when using Rockford altimeter setting. For inoperative MALS, increase LPV and LNAV/VNAV all Cats visibility to ½ mile. For inoperative MALS when using Rockford altimeter setting, increase LPV all Cats and LNAV C/D visibility to 1 ½ mile. Circling NA to Rwy 13, 18, 31, 36.

MALS

MISSED APPROACH:
Climb to 2600 direct HANKS and hold.

AWOS-3 120.525	ROCKFORD APP CON 126.0 327.0	CLNC DEL 121.85	UNICOM 122.8 (CTAF)
--------------------------	--	---------------------------	-------------------------------



ELEV 859

TDZE 847

2600

HANKS

LUNDN

ADOSE

5 NM Holding Pattern

*LNAV only.

*0.9 NM to RW24

RW24

1580

GP 3.00°

TCH 45

CATEGORY	A	B	C	D
LPV DA		1097-½	250 (300-½)	
LNAV/VNAV DA		1097-½	250 (300-½)	
LNAV MDA		1180-½	333 (400-½)	
CIRCLING	1300-1 441 (500-1)	1340-1 481 (500-1)	1380-1½ 521 (600-1½)	1440-2 581 (600-2)

MIRL Rwy 6-24