

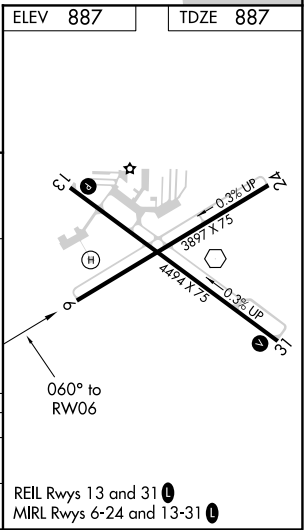
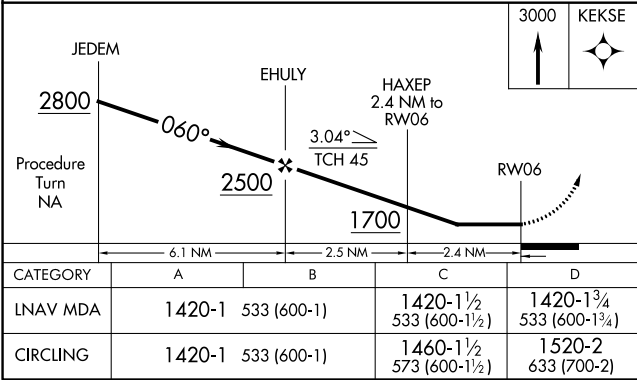
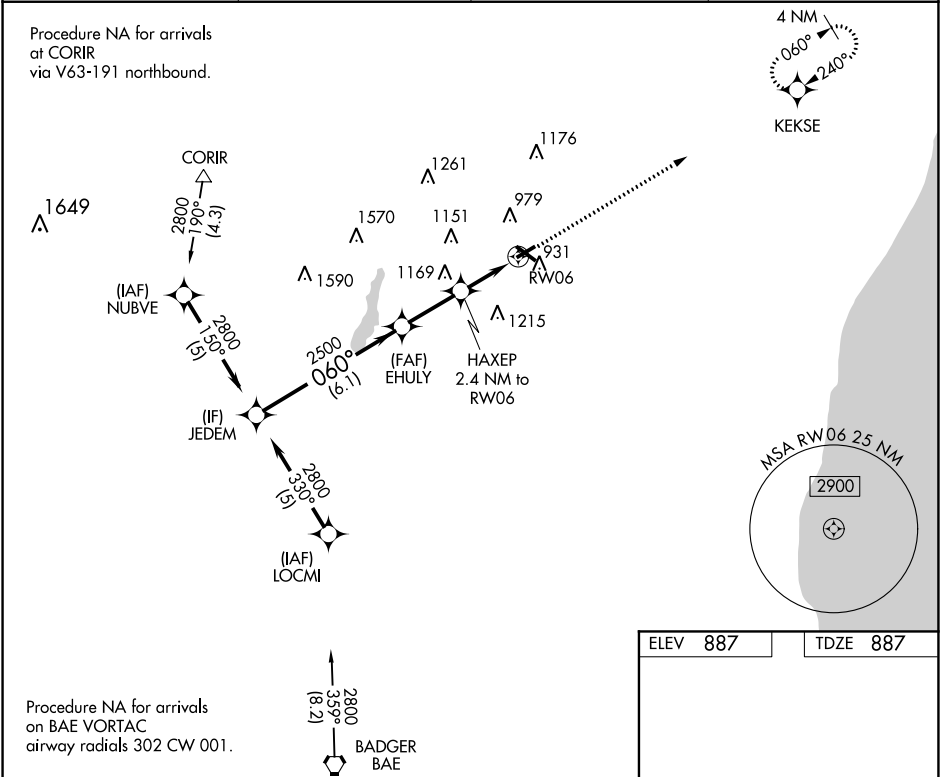
APP CRS	Rwy Idg	3897
060°	TDZE	887
	Apt Elev	887

RNAV (GPS) RWY 6
WEST BEND MUNI (ETB)

⚠ DME/DME RNP-0.3 NA. When local altimeter setting not received, use Milwaukee/Lawrence J. Timmerman altimeter setting and increase all MDA 80 feet and LNAV and Circling Cat C/D visibility ¼ mile. Night landing: Rwy 6 NA. Helicopter visibility reduction below 1 SM NA.

MISSED APPROACH:
Climb to 3000 direct
KEKSE and hold.

AWOS-3 120.0	MILWAUKEE APP CON 125.35 307.0	CLNC DEL 124.75	UNICOM 122.8 (CTAF) ⓪
-----------------	-----------------------------------	--------------------	---------------------------------



EC-3, 31 DEC 2020 to 28 JAN 2021

EC-3, 31 DEC 2020 to 28 JAN 2021