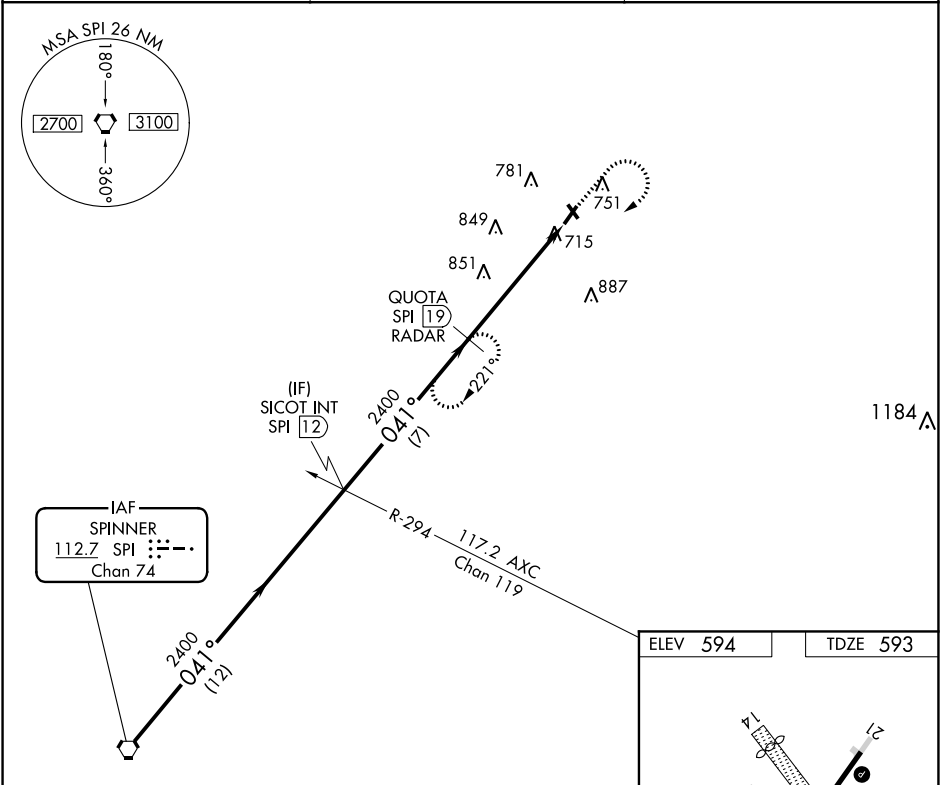


VORTAC SPI <b>112.7</b> Chan <b>74</b>	APP CRS <b>041°</b>	Rwy Idg TDZE <b>593</b> Apt Elev <b>594</b>
--	------------------------	---

VOR RWY 3  
LOGAN COUNTY (AAA)

DME or RADAR required.	MISSED APPROACH: Climb to 2000 then climbing right turn to 2400 via SPI R-041 to QUOTA/19 DME/RADAR and hold.
▼ If local altimeter setting not received, use Springfield, IL altimeter setting and increase all MDAs 60 feet. Circling NA to Rwy 14 and 32. Rwy 3 helicopter visibility reduction below ¾ SM NA.	

AWOS-3 <b>118.775</b>	SPRINGFIELD APP CON ★ <b>126.15 323.0</b>	UNICOM <b>122.8</b> (CTAF) <b>0</b>
--------------------------	--	--



Procedure Turn NA	VGSI and descent angles not coincident (VGSI Angle 3.50/TCH 26).			
SPI VORTAC	SICOT INT SPI 12	QUOTA SPI 19 RADAR	2000	2400
2400	041°	2400	↑	QUOTA SPI 19
12 NM		7 NM	5.4 NM	SPI 24.4
3.09° TCH 36				
CATEGORY	A	B	C	D
S-3	1120-1 527 (600-1)	1120-1¼ 527 (600-1¼)	1120-1½ 527 (600-1½)	1120-1¾ 527 (600-1¾)
CIRCLING	1140-1 546 (600-1)	1140-1¼ 546 (600-1¼)	1140-1½ 546 (600-1½)	1160-2 566 (600-2)

ELEV 594	TDZE 593
REIL Rwy 3 <b>0</b> MIRL Rwy 3-21 <b>0</b>	
FAF to MAP 5.4 NM	
Knots	60 90 120 150 180
Min:Sec	5:24 3:36 2:42 2:10 1:48

EC-3, 31 DEC 2020 to 28 JAN 2021

EC-3, 31 DEC 2020 to 28 JAN 2021