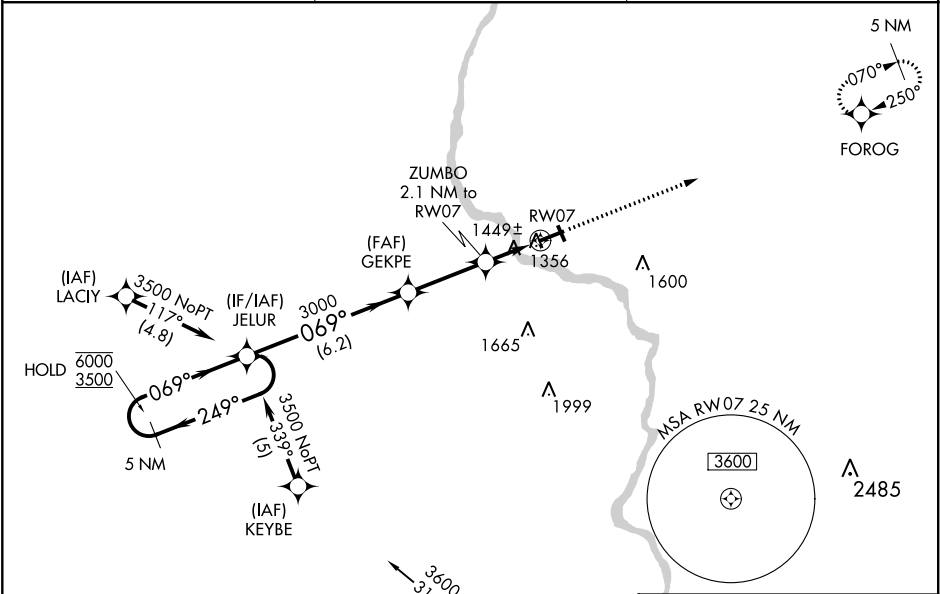


| | | |
|--|------------------------|---|
| WAAS CH 70604 W07A | APP CRS 069° | Rwy Idg TDZE 1318 Apt Elev 1318 |
|--|------------------------|---|

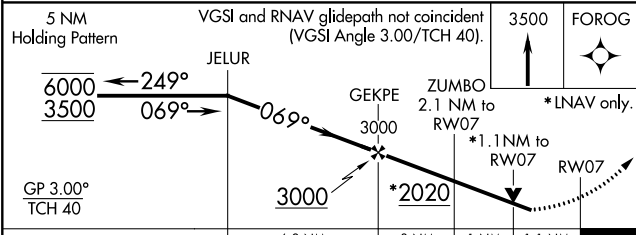
RNAV (GPS) RWY 7
MERRILL MUNI (R.R.L.)

| | |
|---|---|
| RNP APCH. | MISSED APPROACH: Climb to 3500 direct FOROG and hold. |
| <p>▼ Circling Rwy 16, 34 NA at night. Rwy 7 helicopter visibility reduction below ¾ SM NA. ▲ For uncompensated Baro-VNAV systems, LNAV/VNAV NA below -17°C or above 54°C.</p> | |

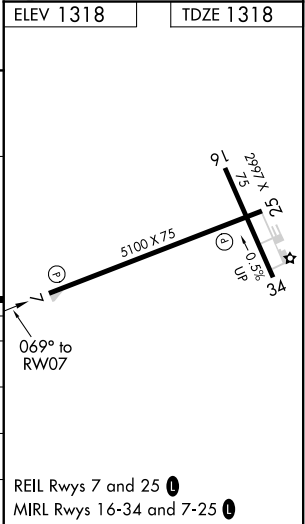
| | | |
|--------------------------|--|---------------------------------|
| AWOS-3 119.925 | MINNEAPOLIS CENTER 124.4 317.7 | UNICOM 122.8 (CTAF) 0 |
|--------------------------|--|---------------------------------|



Procedure NA for arrivals at AUW
VOR/DME on airway radials 271 CW 005.



| CATEGORY | A | B | C | D |
|--------------|-----------------------|-----------------------|-------------------------|----|
| LPV DA | 1635-1¼ | 317 (400-1¼) | | NA |
| LNAV/VNAV DA | 1754-1½ | 436 (500-1½) | | NA |
| LNAV MDA | 1700-1 | 382 (400-1) | | NA |
| CIRCLING | 1760-1 442 (500-1) | 1780-1 462 (500-1) | 1780-1½ 462 (500-1½) | NA |



EC-3, 31 DEC 2020 to 28 JAN 2021

EC-3, 31 DEC 2020 to 28 JAN 2021