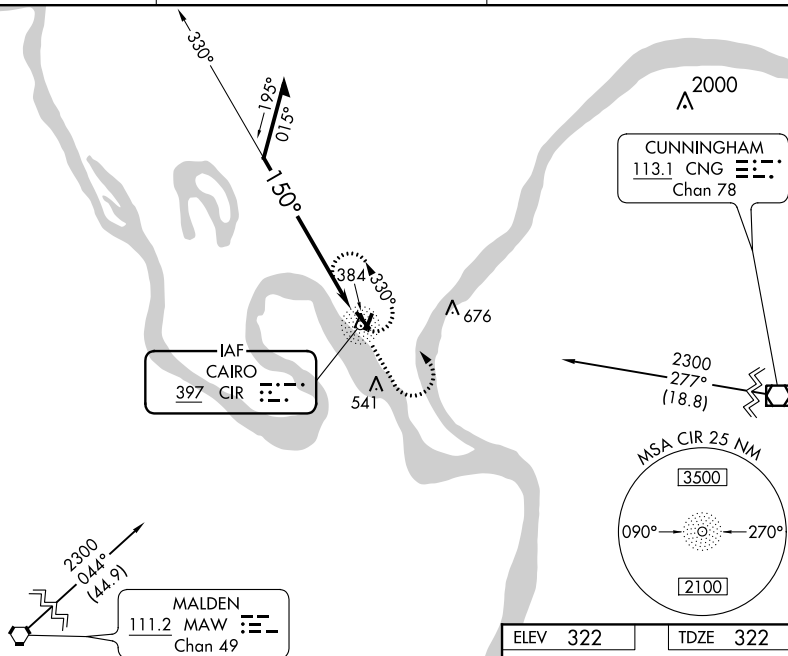


20198

NDB RWY 14
CAIRO RGNL (CIR)

MISSED APPROACH: Climb to 2300 then left turn direct CIR NDB and hold.

UNICOM
122.8 (CTAF) **L**



2300 ↑		CIR 
-----------	---	--

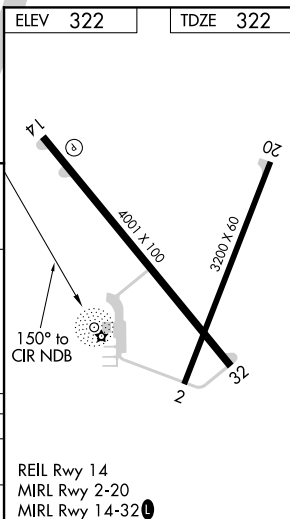
Remain within 10 NM

2300

330°

150°

The diagram shows a flight path starting at an altitude of 2300. The path is divided into three segments: a first segment heading 330°, a second segment heading 150°, and a third segment represented by a dotted line indicating a curved path. A vertical line is positioned between the first and second segments. A note 'Remain within 10 NM' is placed near the start of the path.



CATEGORY	A	B	C	D
S-14	1400-1¼ 1078 (1100-1¼)	1400-1½ 1078 (1100-1½)	1400-3 1078 (1100-3)	NA
C CIRCLING	1400-1¼ 1078 (1100-1¼)	1400-1½ 1078 (1100-1½)	1400-3 1078 (1100-3)	NA

REIL Rwy 14
MIRL Rwy 2-20
MIRL Rwy 14-32 **L**

CAIRO RGNL (CIR)
NDB RWY 14

DEC-3, 31 DEC 2020 to 28 JAN 2021