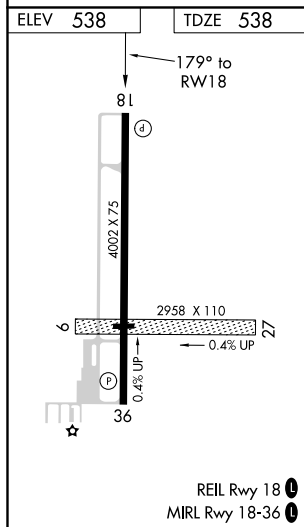
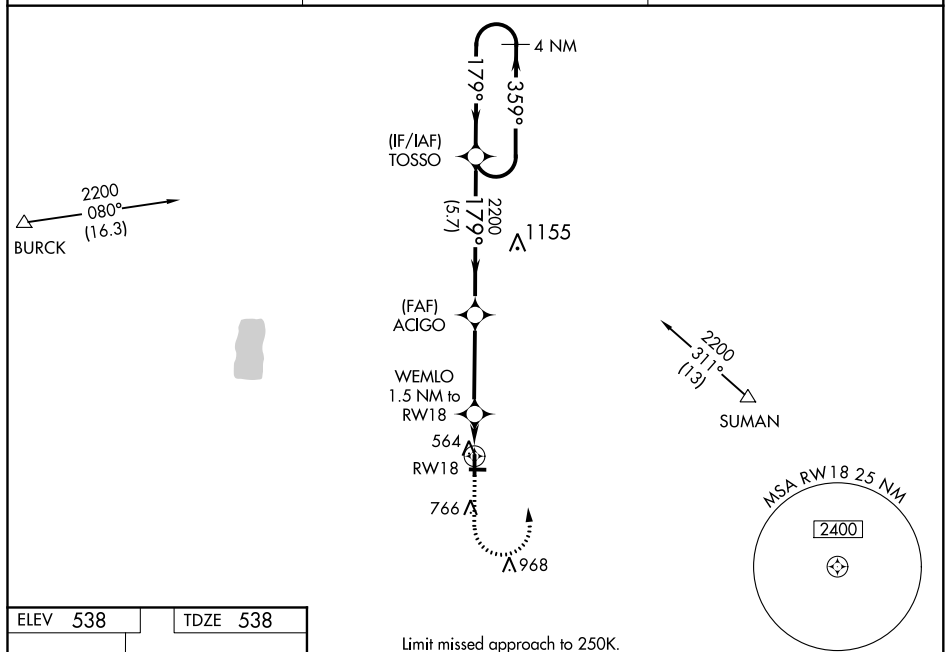


RNAV (GPS) RWY 18
SPARTA COMMUNITY-HUNTER FIELD (SAB)

Baro-VNAV NA when using Scott AFB/Midamerica altimeter setting. For uncompensated Baro-VNAV systems, LNAV/VNAV NA below -16°C (4°F) or above 54°C (130°F). DME/DME RNP-0.3 NA. Helicopter visibility reduced below ¼ SM NA. When local altimeter setting not received, use Scott AFB/Midamerica altimeter setting and increase all DA 68 feet and all MDA 80 feet, increase LNAV and circling Cat C/D visibility ¼ mile. Circling NA to Rwy 9/27.

MISSED APPROACH:
Climb to 1200 then
climbing left turn to
2200 direct TOSSO
and hold.

AWOS-3 118,375	ST. LOUIS APP CON 125.2 281.5	UNICOM 123,075 (CTAF) 0
--------------------------	---	-----------------------------------



<div><div>1200 ↑</div><div>2200 ↖</div><div>TOSSO </div></div>		VGSi and RNAV glidepath not coincident (VGSi Angle 3.00/TCH 20).		4 NM Holding Pattern	
<div><div>*LNAV only</div><div>WEMLO 1.5 NM to RW18</div><div></div></div>		ACIGO 2200	TOSSO	<div><div>359° →</div><div>179° ←</div><div>2200</div><div>GP 3.00° TCH 55</div></div>	
<div><div></div><div>1.5 NM</div><div></div><div>3.6 NM</div><div></div><div>5.7 NM</div></div>					
CATEGORY		A	B	C	D
LPV	DA	788-1 250 (300-1)			
LNAV/ VNAV	DA	788-1 250 (300-1)			
LNAV	MDA	880-1 342 (400-1)			
CIRCLING		980-1 442 (500-1)	1140-1 602 (700-1)	1140-1 ³ / ₄ 602 (700-1 ³ / ₄)	1140-2 602 (700-2)