

WAAS CH 99304 W22A	APP CRS 227°	Rwy Idg 5000 TDZE 1642 Apt Elev 1642
--	------------------------	---

RNAV (GPS) RWY 22

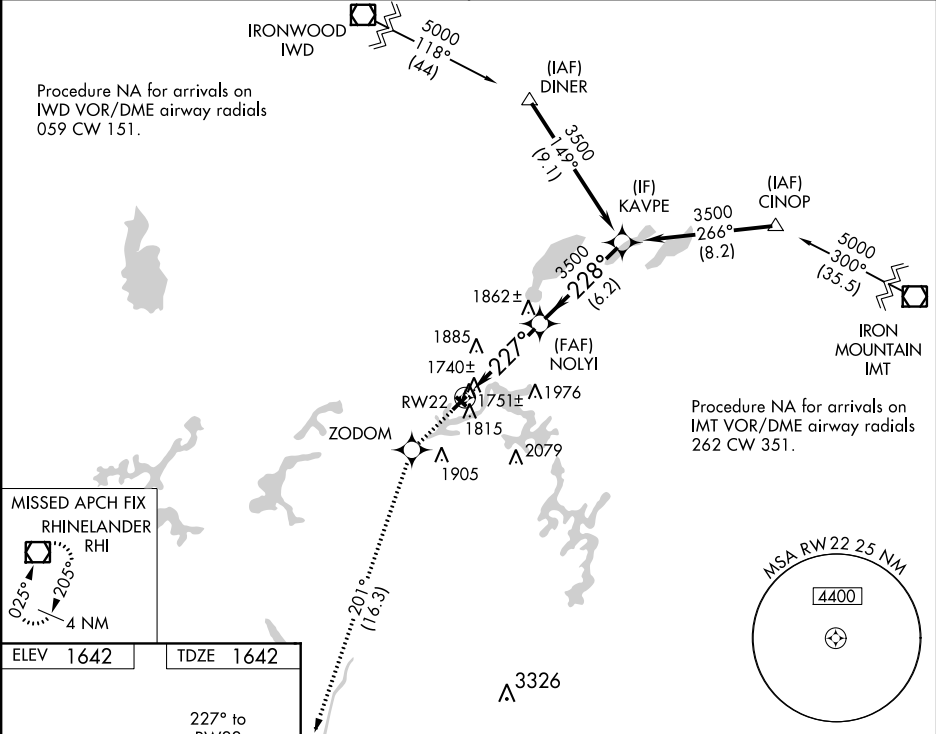
EAGLE RIVER UNION (EGV)

RNP APCH

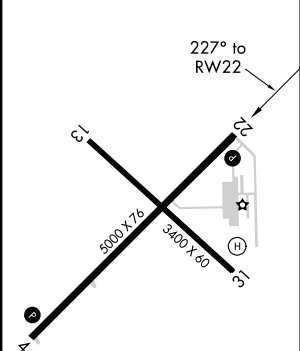
Baro-VNAV and VDP NA when using Minocqua-Woodruff altimeter setting. For uncompensated Baro-VNAV systems, LNAV/VNAV NA below -18°C or above 45°C. When local altimeter setting not received, use Minocqua-Woodruff altimeter setting and increase all DAs 47 feet and all MDAs 60 feet, increase LNAV Cat C visibility ¼ SM, Cat D ⅓ SM. Rwy 22 helicopter visibility reduction below ¾ SM NA.

MISSED APPROACH:
Climb to 3500 direct
ZODOM and via track
201° to RHI VOR/DME
and hold.

AWOS-3 118.325	MINNEAPOLIS CENTER 133.65 281.5	UNICOM 122.8 (CTAF) 0
--------------------------	---	---------------------------------



ELEV 1642	TDZE 1642
-----------	-----------



REIL Rwy 4 and 22 0
MIRL Rwy 4-22 and 13-31 0

3500

ZODOM

tr 201°

RHI

VGSI and RNAV glidepath not coincident (VGSI Angle 3.00/TCH 34).

NOLYI

KAVPE

3500

228°

3500

*LNAV only.

*1.2 NM to RWY 22

RWY 22

227°

3500

GP 3.00° TCH 40

1.2

4.4 NM

6.2 NM

CATEGORY	A	B	C	D
LPV DA	2012-1¼	370 (400-1¼)		
LNAV/VNAV DA	2038-1½	396 (400-1½)		
LNAV MDA	2040-1	398 (400-1)	2040-1⅛ 398 (400-1⅛)	2040-1¼ 398 (400-1¼)
CIRCLING	2120-1	478 (500-1)	2120-1½ 478 (500-1½)	2200-2 558 (600-2)