

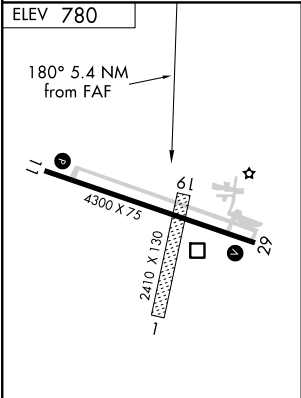
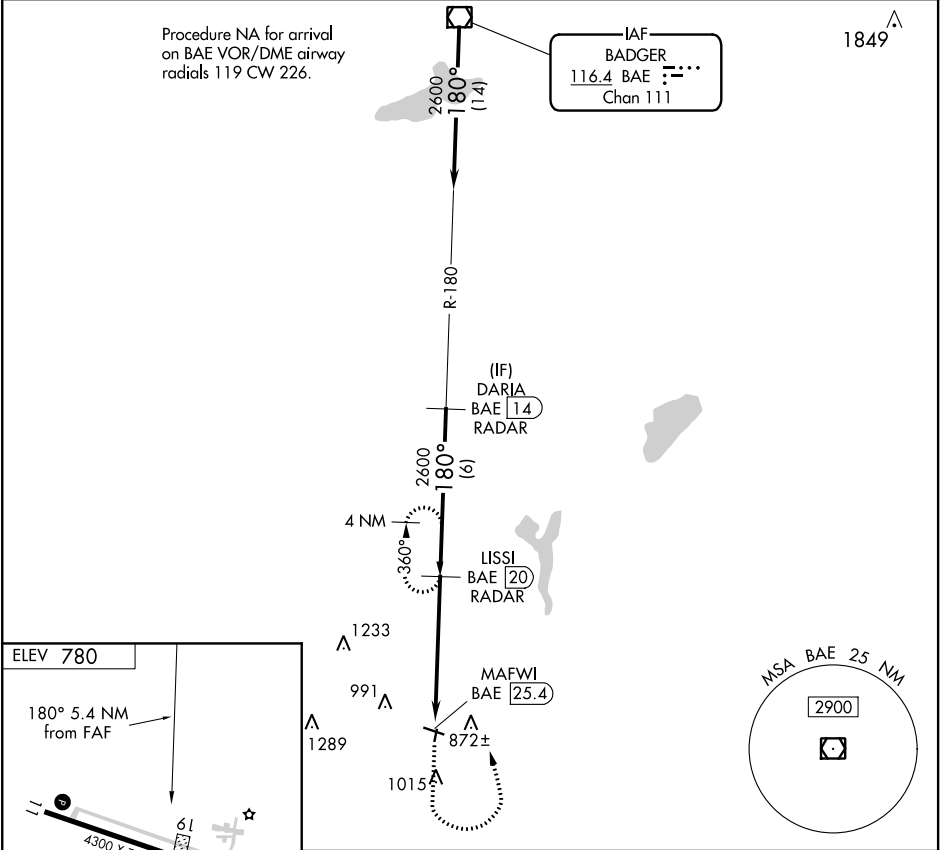
VOR/DME BAE	APP CRS	Rwy Idg	N/A
116.4	180°	TDZE	N/A
Chan 111		Apt Elev	780

VOR-A



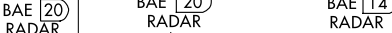

BURLINGTON MUNI (BUU)

DME or RADAR required.		MISSED APPROACH: Climb to 2600 then left turn on BAE VOR/DME R-180 to LISSI/20 DME/RADAR and hold.
	Circling NA to Rwy 1 and 19. Circling Rwy 29 NA at night. When local altimeter setting not received, use General Mitchell Intl altimeter setting and increase all MDA 80 feet, increase Circling Cat C/D visibility ¼ SM.	

AWOS-3 125.275	MILWAUKEE APP CON 135.875 307.0	GCO 121.725	UNICOM 123.05 (CTAF) 0
--------------------------	---	-----------------------	----------------------------------



FAF to MAP 5.4 NM					
Knots	60	90	120	150	180
Min:Sec	5:24	3:36	2:42	2:10	1:48

2600		LISSI BAE 20 RADAR	LISSI BAE 20 RADAR	DARIA BAE 14 RADAR
				
CATEGORY	A	B	C	D
 CIRCLING	1400-1	620 (700-1)	1400-1¾ 620 (700-1¾)	1560-2½ 780 (800-2½)