

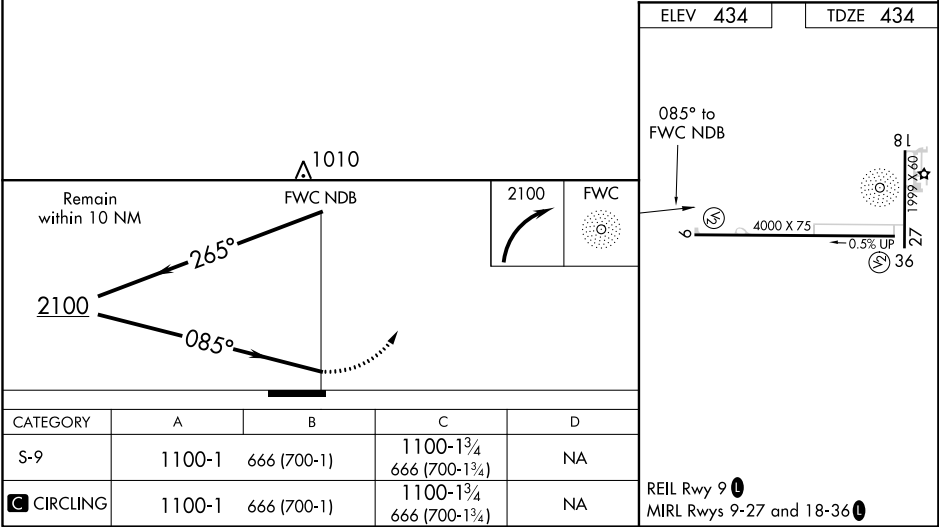
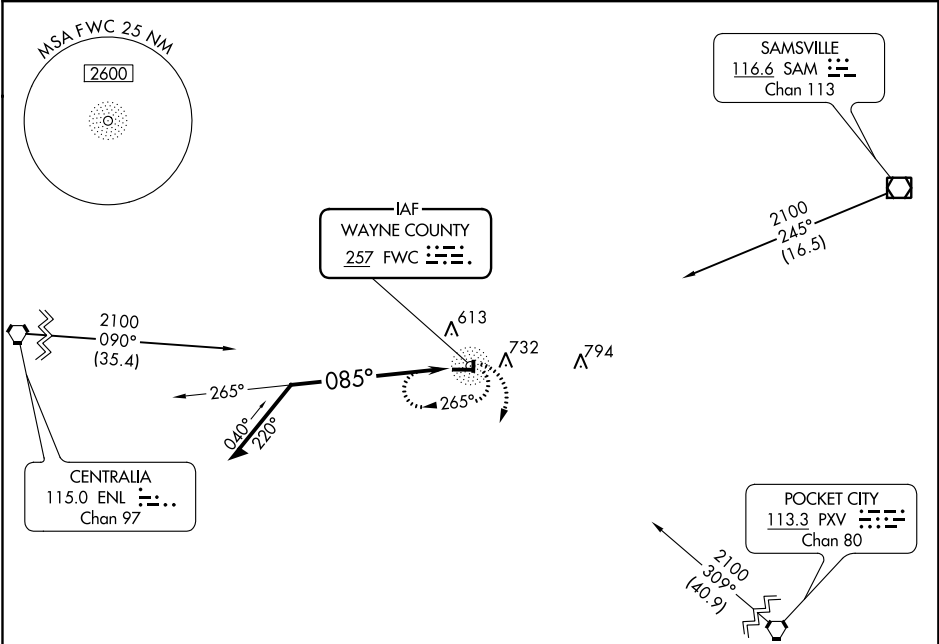



NDB FWC	APP CRS	Rwy Idg	4000
257	085°	TDZE	434
		Apt Elev	434

NDB RWY 9
FAIRFIELD MUNI (FWC)

 Night landing: Rwy 9, 27, 36 NA. Helicopter visibility reduction below 1 SM NA.	MISSED APPROACH: Climbing right turn to 2100 in the FWC NDB holding pattern.
---	--

AWOS-3 119.425	KANSAS CITY CENTER 127.7 351.825	UNICOM 123.05 (CTAF) 
-------------------	-------------------------------------	---



CATEGORY	A	B	C	D
S-9	1100-1	666 (700-1)	1100-1¾ 666 (700-1¾)	NA
 CIRCLING	1100-1	666 (700-1)	1100-1¾ 666 (700-1¾)	NA