

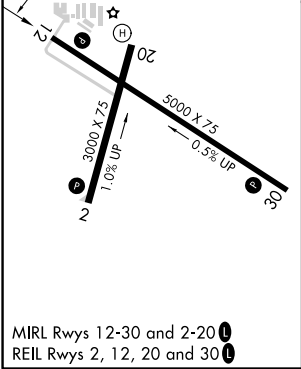
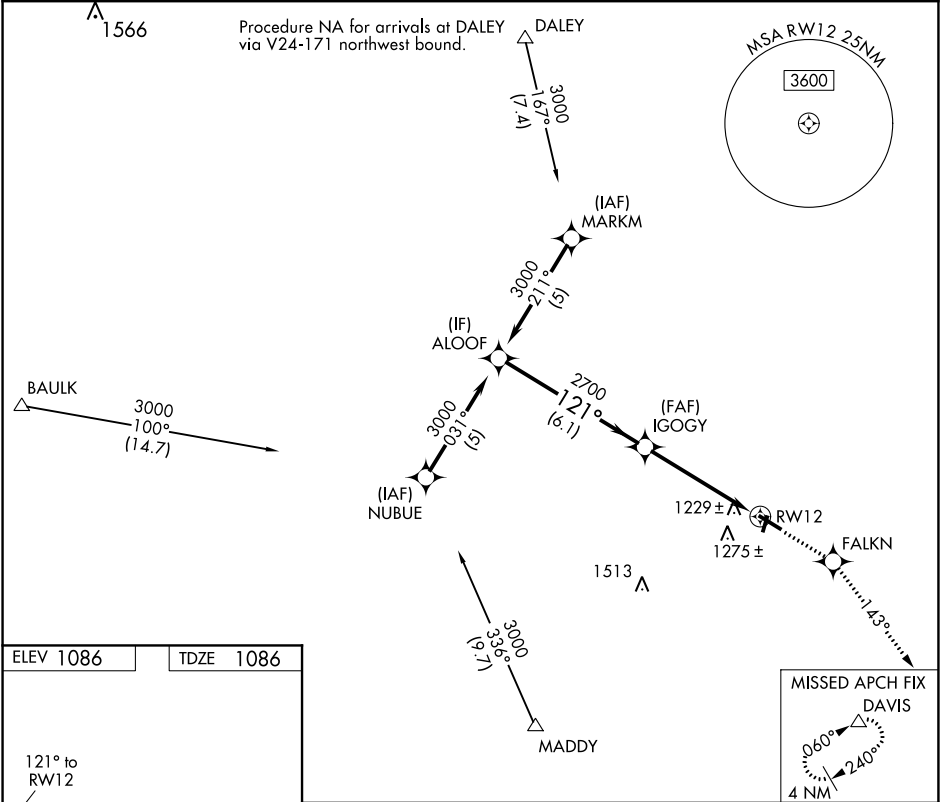
APP CRS	Rwy Idg	5000
121°	TDZE	1086
	Apt Elev	1086

RNAV (GPS) RWY 12
MONROE MUNI (EFT)

⚠ DME/DME RNP-0.3 NA. VDP NA when using Altimeter setting. When local altimeter setting not received, use Altimeter setting and increase all MDA 100 feet, increase LNAV Cat C/D and Circling Cat C visibility ¼ mile. Helicopter visibility reduction below ¾ SM NA.

MISSED APPROACH: Climb to 3000 direct FALKN and via 143° track to DAVIS and hold.

AWOS-3 118.375	ROCKFORD APP CON 126.0 327.0	UNICOM 123.05 (CTAF) 0
-------------------	---------------------------------	----------------------------------



Procedure Turn NA	ALOOF	3000	121°	IGOGY	2700	3.04° TCH 40	1.1 NM to RW12	RW12	1.1
			6.1 NM			3.8 NM			
CATEGORY	A	B	C	D					
LNAV MDA	1480-1	394 (400-1)			1480-1¼	394 (400-1¼)			
CIRCLING	1540-1 454 (500-1)	1640-1 554 (600-1)	1640-1½ 554 (600-1½)	1640-2 554 (600-2)					

EC-3, 31 DEC 2020 to 28 JAN 2021

EC-3, 31 DEC 2020 to 28 JAN 2021