

| | | |
|-------------|----------|-------------|
| APP CRS | Rwy Idg | 5000 |
| 301° | TDZE | 1070 |
| | Apt Elev | 1086 |

RNAV (GPS) RWY 30
MONROE MUNI (EFT)

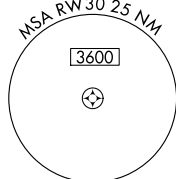
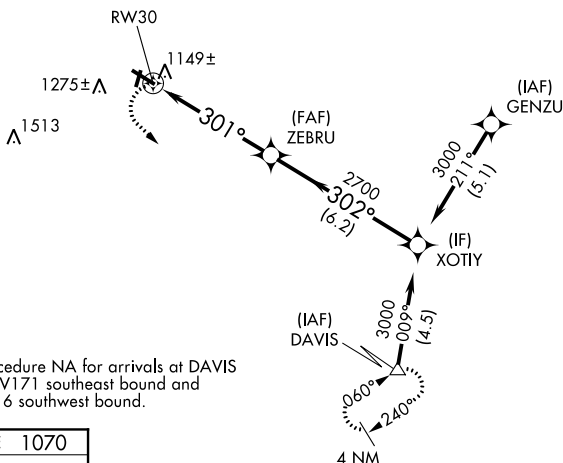
TA

DME/DME RNP-0.3 NA. When local altimeter setting not received, use Albertus altimeter setting and increase all MDA 100 feet, increase LNAV Cat C/D and Circling Cat C visibility $\frac{1}{4}$ mile. VDP NA when using Albertus altimeter setting. Helicopter visibility reduction below $\frac{3}{4}$ SM NA.

MISSED APPROACH:
Climbing left turn to 3000
direct DAVIS and hold.

AWOS-3
118.375

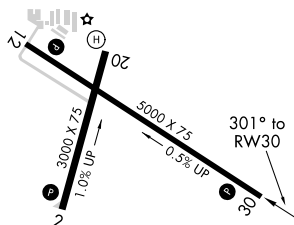
ROCKFORD APP CON
126.0 327.0

UNICOM
123.05 (CTAF) **L**2049 Δ 

Procedure NA for arrivals at DAVIS
via V171 southeast bound and
V216 southwest bound.

ELEV 1086

TDZE 1070

MIRI R_{WYS} 12-30 and 2-20 **L**

Orig-A 23JUL15

42°37'N-89°35'W

MONROE MUNI (EFT)

RNAV (GPS) RWY 30