

VOR/DME JVL	APP CRS	Rwy Idg	5000
114.3	276°	TDZE	1070
Chan 90		Apt Elev	1086

VOR/DME RWY 30

MONROE MUNI (EFT)

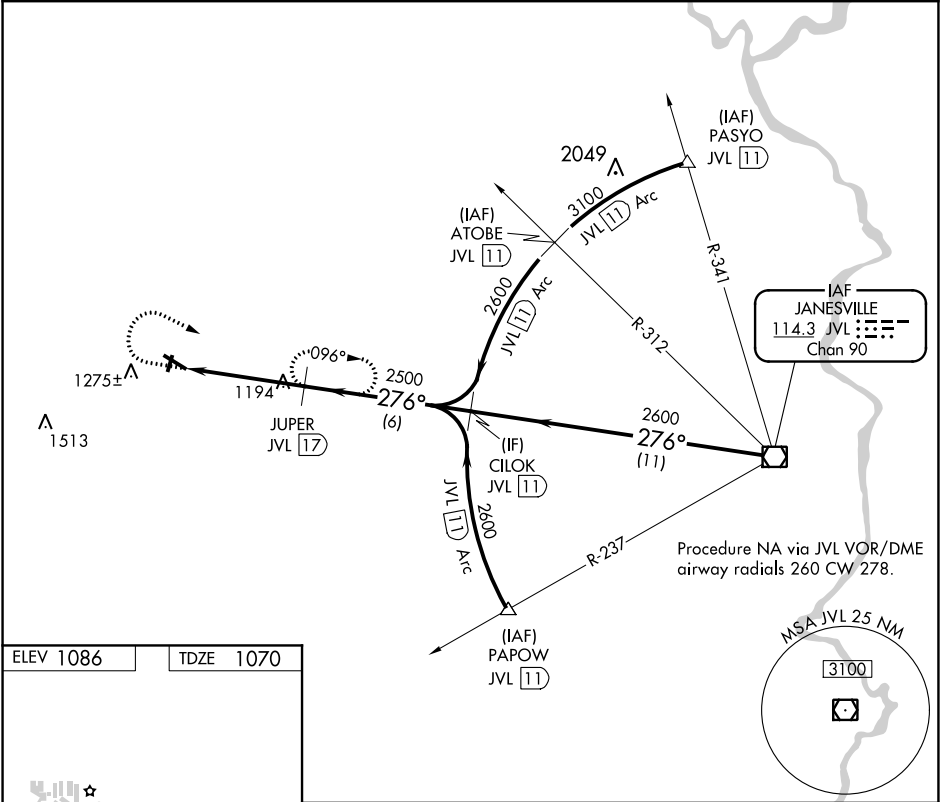
⚠

When local altimeter setting not received, use Albertus altimeter setting and increase all MDA 100 feet, increase Circling Cat C visibility ¼ mile. Helicopter visibility reduction below ¾ SM NA.

MISSED APPROACH:

Climb to 1800 then climbing right turn to 2600 via JVL VOR/DME R-276 to JUPER/JVL 17 DME and hold.

AWOS-3 118.375	ROCKFORD APP CON 126.0 327.0	UNICOM 123.05 (CTAF) 0
-------------------	---------------------------------	---------------------------



ELEV 1086

TDZE 1070

MIRL Rwy 12-30 and 2-20

REIL Rwy 2, 12, 20 and 30

	1800	2600	JUPER JVL 17	JVL R-276	JVL 21.3	2500	2600	2700	JVL VOR/DME
					3.04° TCH 42				
					4.3 NM	6 NM	11 NM		
CATEGORY	A	B	C	D	Procedure Turn NA				
S-30	1460-1 390 (400-1)	1460-1¼ 390 (400-1½)	1460-1½ 390 (400-1½)	1460-1¾ 390 (400-1¾)					
CIRCLING	1540-1 454 (500-1)	1640-1¼ 554 (600-1½)	1640-1½ 554 (600-1½)	1640-2 554 (600-2)					