

WAAS CH 58109 W02A	APP CRS 021°	Rwy Idg TDZE 913 Apt Elev 914	7026 913 914
--	------------------------	---	---

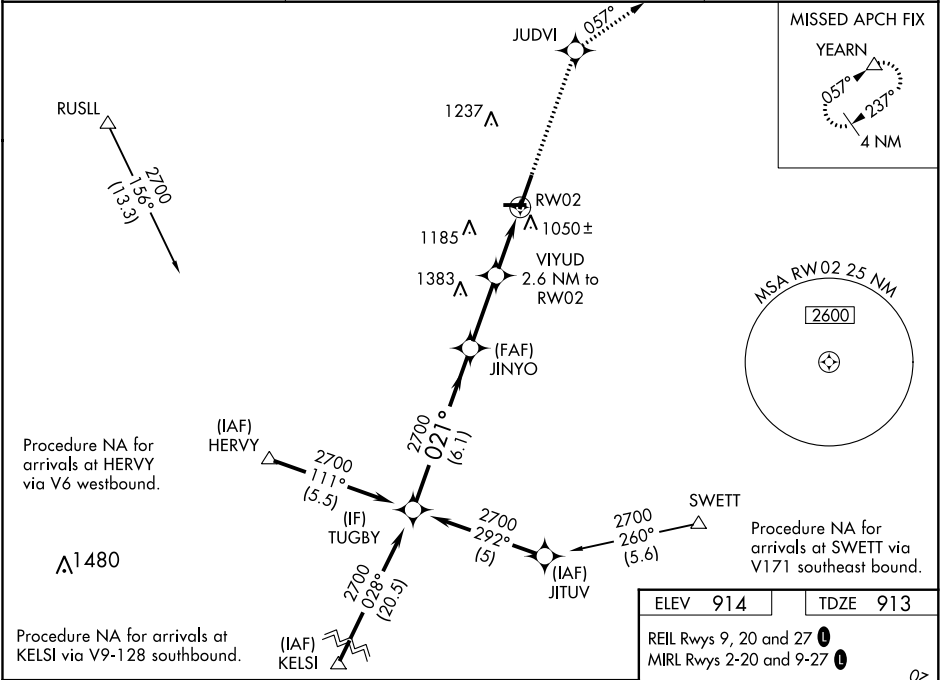
RNAV (GPS) RWY 2
DE KALB TAYLOR MUNI (DKB)

▼ Baro-VNAV NA when using Aurora altimeter setting. For uncompensated Baro-VNAV systems, LNAV/VNAV NA below -16°C (4°F) or above 47°C (116°F). DME/DME RNP-0.3 NA. VDP NA when using Aurora altimeter setting. When local altimeter setting not received, use Aurora altimeter setting and increase all DA 61 feet and all MDA 80 feet; increase all LPV and LNAV/VNAV visibilities, LNAV Cats C/D visibility, and Circling Cats C/D visibility ¼ mile. For inop MALSR, increase LPV all Cats visibility to 1.

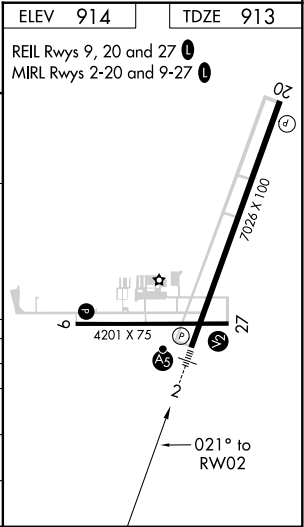
MALSR

MISSED APPROACH:
Climb to 3000 direct
JUDVI and via 057°
track to YEARN and
hold.

AWOS-3 119.075	CHICAGO APP CON 133.5 349.0	UNICOM 122.7 (CTAF) 0
--------------------------	---------------------------------------	---------------------------------



Procedure Turn NA				
GP 3.00° TCH 55				
JUDVI tr 057° YEARN				
*LNAV only.				
*1800				
*1.2 NM to RWY 2				
*2.6 NM to RWY 2				
6.1 NM 2.8 NM 1.4 NM 1.2 NM				
CATEGORY	A	B	C	D
LPV DA	1207-½		294 (300-½)	
LNAV/VNAV DA	1360-1		447 (500-1)	
LNAV MDA	1360-½	447 (500-½)	1360-¾	1360-1
CIRCLING	1360-1	1480-1	1540-1¾	1540-2
	446 (500-1)	566 (600-1)	626 (700-1¾)	626 (700-2)



EC-3, 31 DEC 2020 to 28 JAN 2021

EC-3, 31 DEC 2020 to 28 JAN 2021