

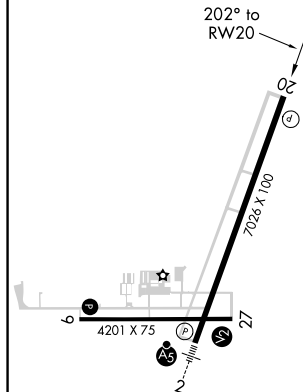
RNAV (GPS) RWY 20
DE KALB TAYLOR MUNI (DKB)

MISSED APPROACH:
Climb to 2700 direct
TUGBY and hold.

UNICOM
122.7 (CTAF)

202° to

Procedure NA for arrivals
at SWETT via V171
southeast bound.



REIL Rwys 9, 20 and 27 **L**
MIRL Rwys 2-20 and 9-27 **L**

2700 ↑	TUGBY ✱	VGS1 and RNAV glidepath not coincident (VGS1 Angle 3.00/TCH27).		POYIV
*LNAV only.		OCIRU 2 NM to RW20	JUDVI	3000
*1.2 NM to RW20		*1580	2500	Procedure Turn NA
RW20		GP 3.00° TCH 45		
1.2 NM		0.8 NM	2.8 NM	6.2 NM
CATEGORY	A		B	C
LPV DA	1155-¾		250 (300-¾)	
LNAV/ VNAV DA	1430-1¾		525 (600-1¾)	
LNAV MDA	1320-1 415 (500-1)		1320-1¼ 415 (500-1¼)	
CIRCLING	1360-1 446 (500-1)	1480-1 566 (600-1)	1540-1¾ 626 (700-1¾)	1540-2 626 (700-2)

RNAV (GPS) RWY 20