

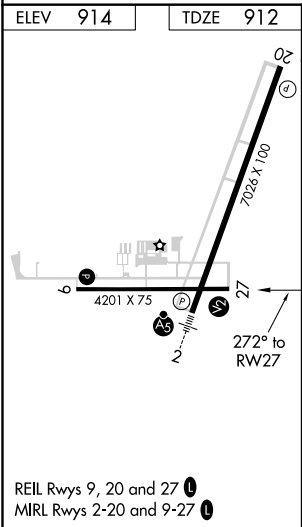
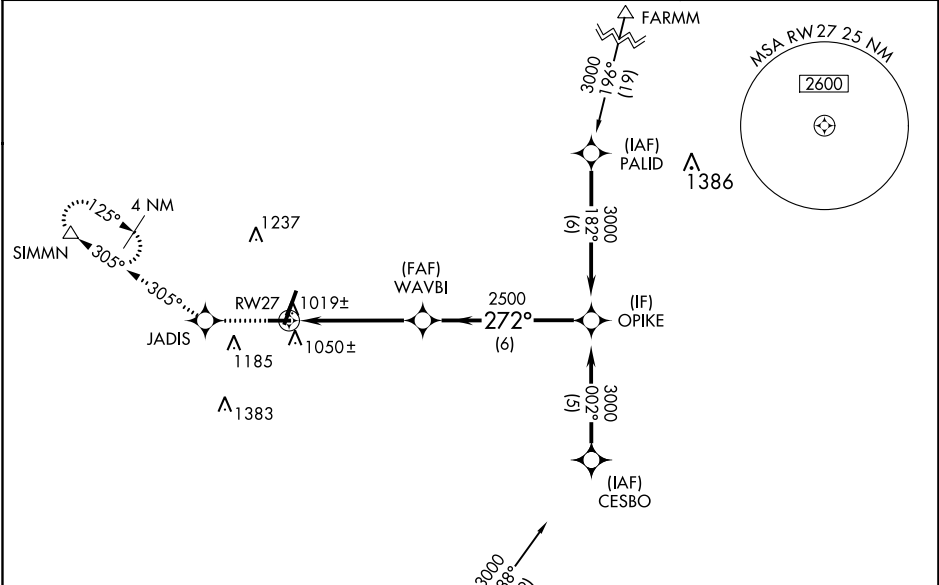
WAAS CH 72709 W27A	APP CRS 272°	Rwy Idg TDZE Apt Elev	4201 912 914
--	------------------------	-----------------------------	---

RNAV (GPS) RWY 27
DE KALB TAYLOR MUNI (DKB)

When local altimeter setting not received, use Aurora altimeter setting and increase all DA 61 feet and all MDA 80 feet; increase all LPV and LNAV/VNAV visibilities, LNAV Cats C/D visibility, and Circling Cats C/D visibility ¼ mile. Baro-VNAV NA when using Aurora altimeter setting. VDP NA when using Aurora altimeter setting. For uncompensated Baro-VNAV systems, LNAV/VNAV NA below -16° C (4°F) or above 47° C (116° F). DME/DME RNP-0.3 NA.

MISSED APPROACH: Climb to 3000 direct JADIS and via 305° track to SIMMN and hold.

AWOS-3 119.075	CHICAGO APP CON 133.5 349.0	UNICOM 122.7 (CTAF) 0
--------------------------	---------------------------------------	---------------------------------



3000	JADIS	305° tr	SIMMN	VGSI and RNAV glidepath not coincident (VGSI Angle 3.00/TCH 22).
*LNAV only.				
*1.3 NM to RW27				
WAVBI				
272°				
2500				
OPIKE				
3000				
GP 3.00° TCH 45				
Procedure Turn NA				
CATEGORY	A	B	C	D
LPV DA	1162-¾ 250 (300-¾)			
LNAV/VNAV DA	1317-1½ 405 (500-1½)			
LNAV MDA	1360-1	448 (500-1)	1360-1¼ 448 (500-1¼)	1360-1½ 448 (500-1½)
CIRCLING	1360-1 446 (500-1)	1480-1 566 (600-1)	1540-1¾ 626 (700-1¾)	1540-2 626 (700-2)

EC-3, 31 DEC 2020 to 28 JAN 2021

EC-3, 31 DEC 2020 to 28 JAN 2021