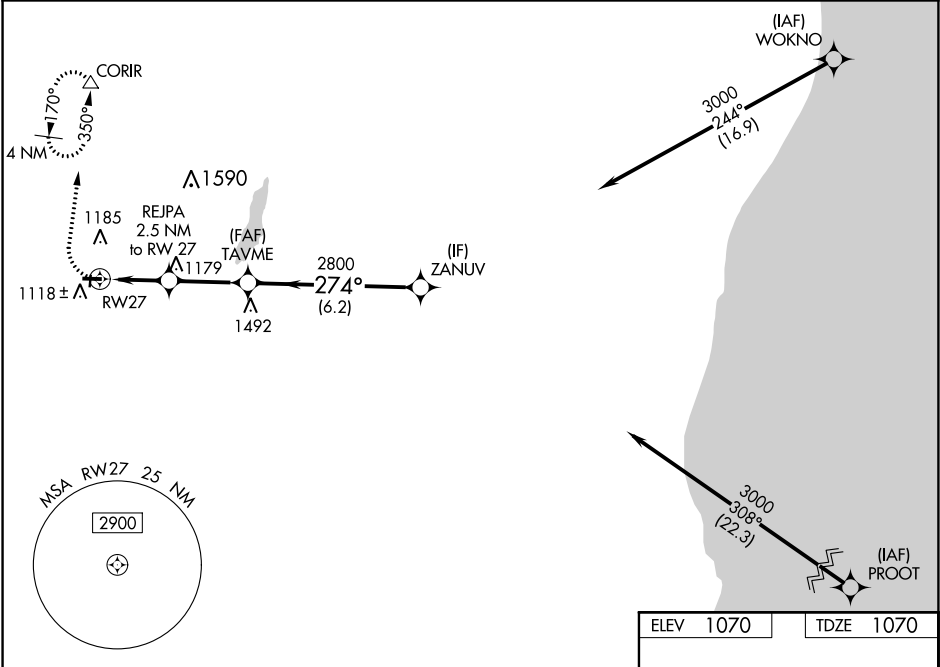


WAAS CH <b>86943</b> <b>W27A</b>	APP CRS <b>274°</b>	Rwy Idg TDZE Apt Elev	<b>3401</b> <b>1070</b> <b>1070</b>
--	------------------------	-----------------------------	---

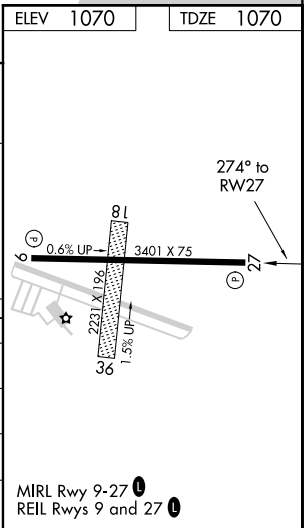
RNAV (GPS) RWY 27  
HARTFORD MUNI (HXT')

RNP APCH.	MISSED APPROACH: Climb to 1700 then climbing right turn to 3000 direct CORIR and hold, continue climb-in-hold to 3000.
NA Circling NA to Rwy 18 and 36. Rwy 27 helicopter visibility reduction below 3/4 SM NA. Baro-VNAV NA. Use West Bend altimeter setting.	

ETB AWOS-3 <b>120.0</b>	MILWAUKEE APP CON <b>125.35 307.0</b>	UNICOM <b>123.0 (CTAF) 0</b>
----------------------------	--	---------------------------------



		ZANUV		TAVME		REJPA 2.5 NM to RW27		RW27	
		3000		2800		*1900			
		GP 3.00° TCH 40							
		274°		2800		*1900			
		6.2 NM		2.8 NM		2.5 NM			
CATEGORY		A		B		C		D	
LPV DA		1374-7/8		304 (400-7/8)				NA	
RNAV/VNAV DA		1415-1		345 (400-1)				NA	
RNAV MDA		1540-1		470 (500-1)				NA	
CIRCLING		1560-1		490 (500-1)				NA	



EC-3, 31 DEC 2020 to 28 JAN 2021

EC-3, 31 DEC 2020 to 28 JAN 2021