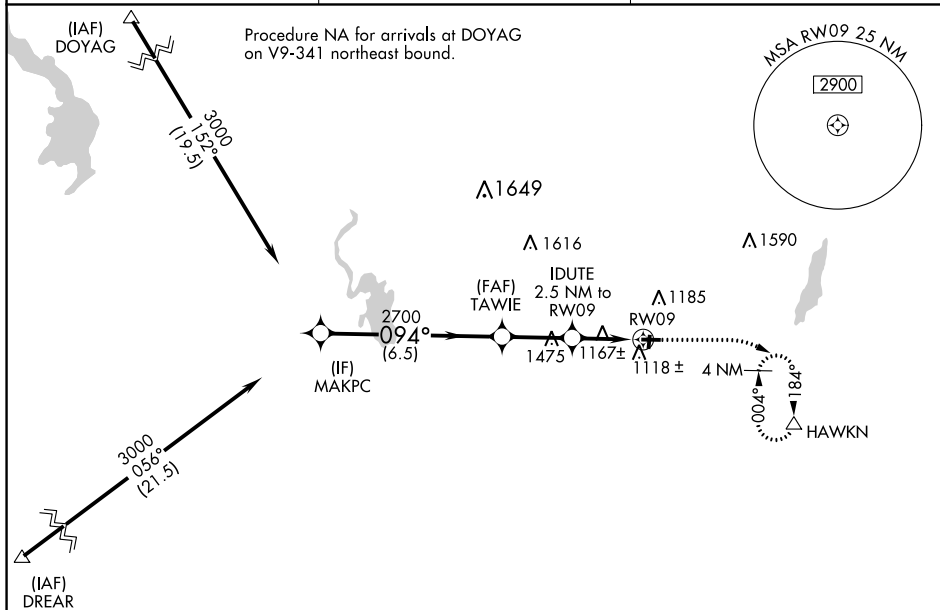


WAAS CH <b>42743</b> <b>W09A</b>	APP CRS <b>094°</b>	Rwy Idg <b>3401</b> TDZE <b>1068</b> Apt Elev <b>1070</b>
--	------------------------	--

RNAV (GPS) RWY 9  
HARTFORD MUNI (HXF)

RNP APCH.		<p>MISSED APPROACH: Climb to 1700 then climbing right turn to 3000 direct HAWKN and hold, continue climb-in-hold to 3000.</p>
<p><b>T</b> Circling NA to Rwy 18 and 36.  <b>A</b> NA Baro-VNAV NA.          Use Westbend altimeter setting.</p>		
<p>ETB AWOS-3  <b>120.0</b></p>	<p>MILWAUKEE APP CON  <b>125.35 307.0</b></p>	<p>UNICOM  <b>123.0</b> (CTAF) <b>0</b></p>



MAKPC 3000 094° 2700 1900 RW09

GP 3.00° TCH 40

IDUTE 2.5 NM to RW09

\*LNAV only.

CATEGORY	A	B	C	D
LPV DA	1372-7/8	304 (400-7/8)	NA	
LNAV/VNAV DA	1372-7/8	304 (400-7/8)	NA	
LNAV MDA	1480-1	412 (500-1)	NA	
<b>C</b> CIRCLING	1560-1	490 (500-1)	NA	

094° to RW09 0.6% UP 3401 X 75 27 2231 X 196 36 1.5% UP