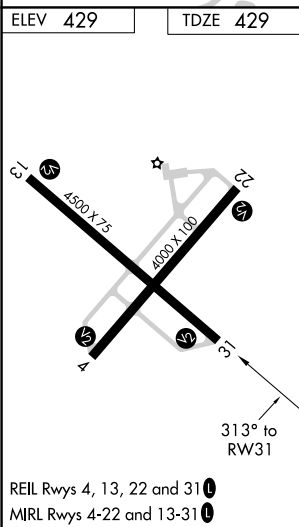
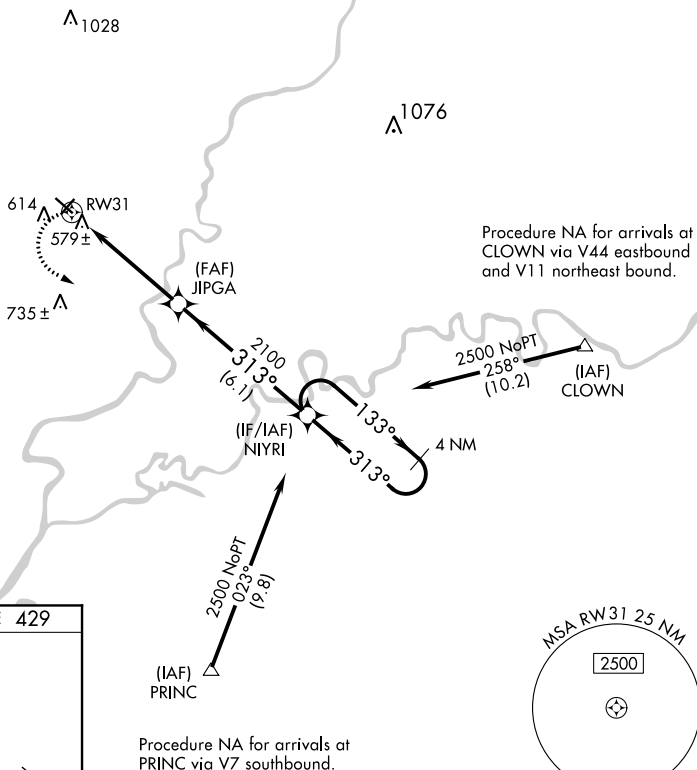


RNAV (GPS) RWY 31
MOUNT CARMEL MUNI (A.JG)

T
A NA When local altimeter setting not received, use Lawrenceville altimeter setting and increase all MDA 40 feet and increase LNAV Cat D visibility ¼ mile.

MISSED APPROACH: Climbing left turn to 2500 direct NIYRI and hold.

EVANSVILLE APP CON★
125.6 343.7

UNICOM
122.7 (CTAF) **L**

MOUNT CARMEL MUNI (AJG)
RNAV (GPS) RWY 31