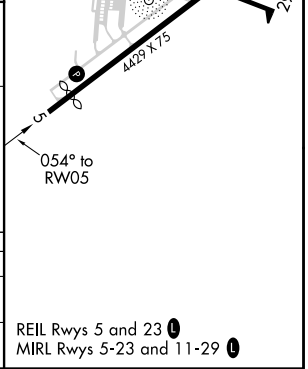
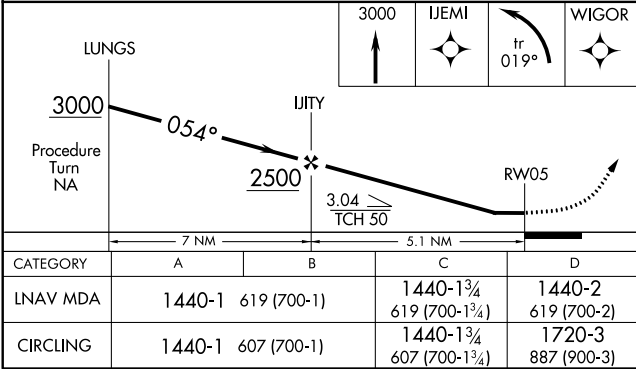
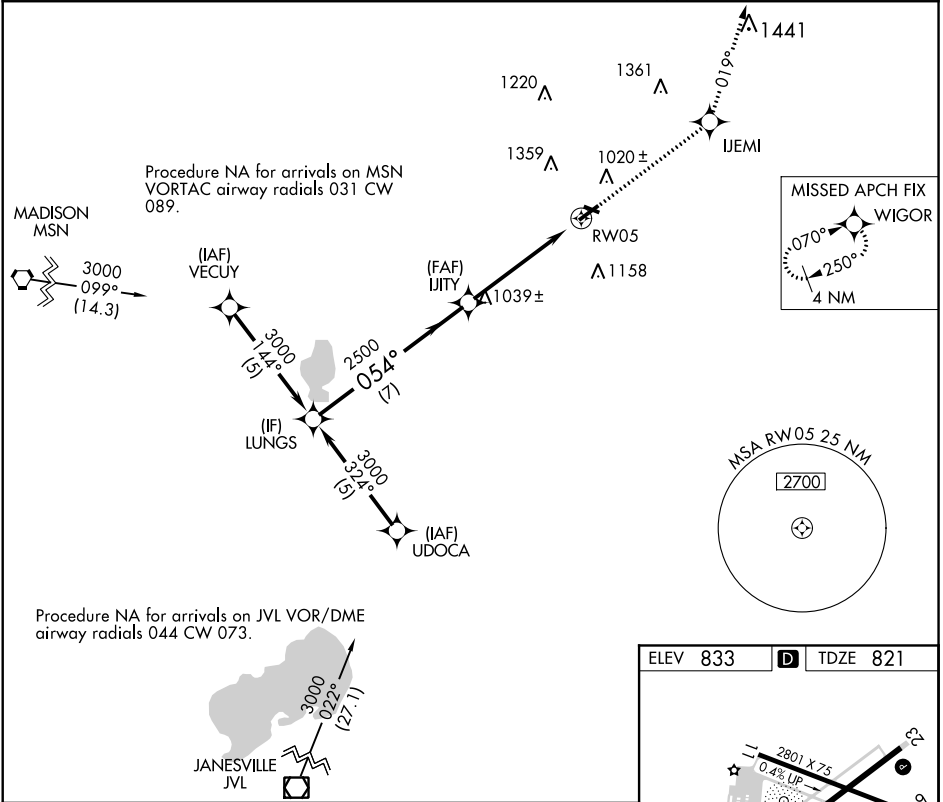


APP CRS	Rwy Idg	4239
054°	TDZE	821
	Apt Elev	833

RNAV (GPS) RWY 5
WATERTOWN MUNI (RYV)

RNP APCH.	MISSED APPROACH: Climb to 3000 direct IJEMI and left turn on 019° track to WIGOR and hold.
Rwy 5 helicopter visibility reduction below ¾ SM NA. When local altimeter setting not received, use Dodge County altimeter setting. Circling Rwy 23 NA at night.	

AWOS-3 119.975	MADISON APP CON ★ 119.15 343.7	UNICOM 122.8 (CTAF) 0
-------------------	-----------------------------------	--------------------------



EC-3, 31 DEC 2020 to 28 JAN 2021

EC-3, 31 DEC 2020 to 28 JAN 2021