

WAAS CH 66011 W27A	APP CRS 269°	Rwy Idg 6000 TDZE 1478 Apt Elev 1478
--	------------------------	---

RNAV (GPS) RWY 27
TAYLOR COUNTY (MDZ)

RNP APCH.

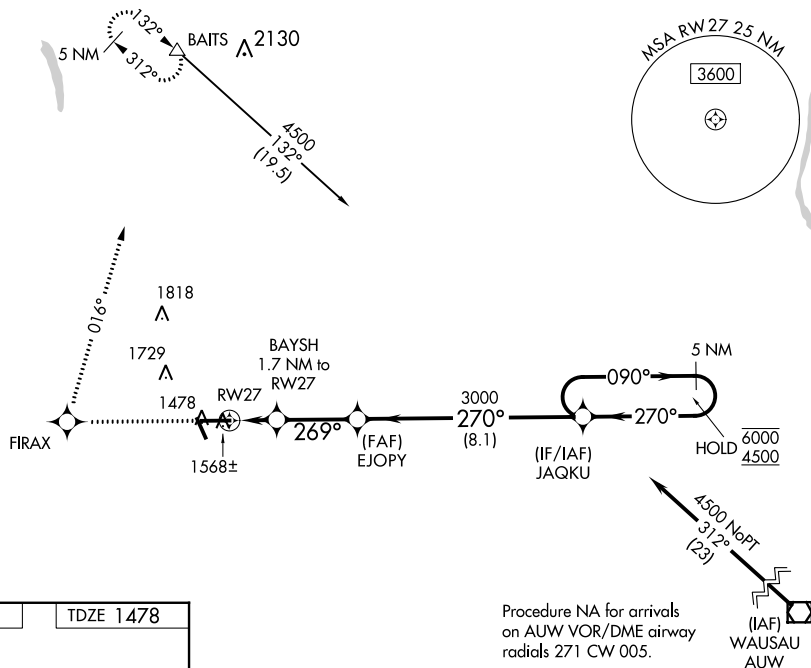


For uncompensated Baro-VNAV systems, LNAV/VNAV NA below -17°C or above 45°C.

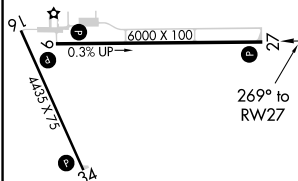
MISSED APPROACH: Climb to 4500
direct FIRAX and right turn on 016°
track to BAITS and hold.

AWOS-3
119.025

MINNEAPOLIS CENTER
124.4 317.7

UNICOM
122.8 (CTAF) **L**

ELEV 1478		TDZE 1478
-----------	--	-----------

[illegible]

MEDFORD, WISCONSIN

Orig-A 10SEP20

45°06'N-90°18'W

TAYLOR COUNTY (MDZ)

RNAV (GPS) RWY 27