

WAAS CH 45629 W27A	APP CRS 265°	Rwy Idg 3400 TDZE 1523 Apt Elev 1523
--	------------------------	---

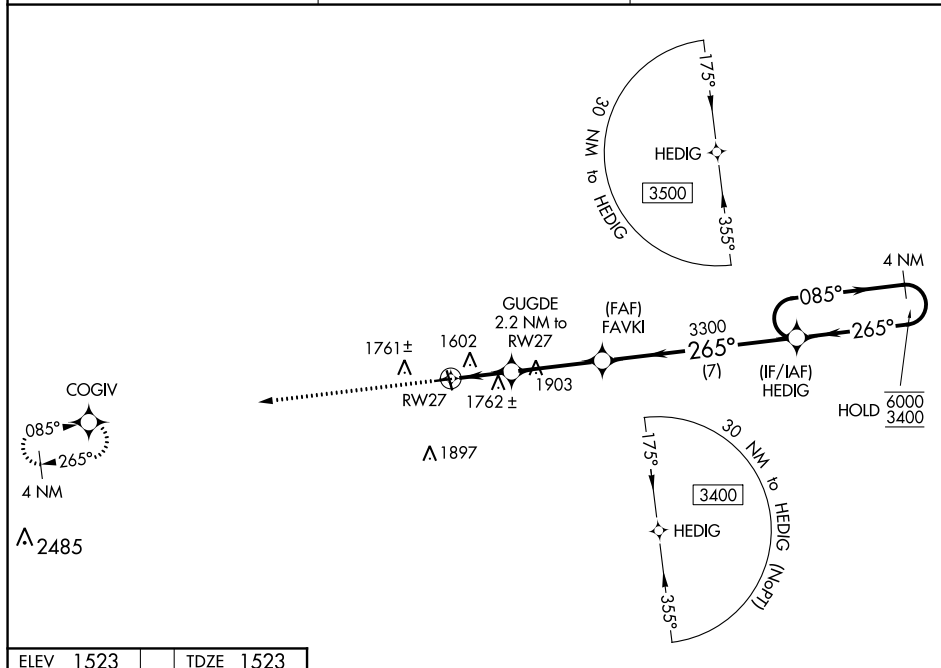
RNAV (GPS) RWY 27
LANGLADE COUNTY (AIG)

RNP APCH.

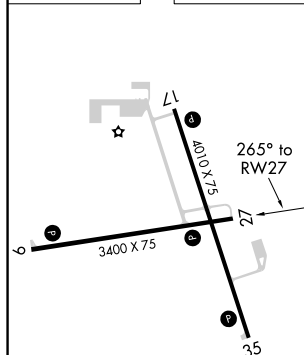
T Rwy 27 helicopter visibility reduction below $\frac{3}{4}$ SM NA.
A For uncompensated Baro-VNAV systems, LNAV/VNAV NA below -18°C or above 54°C.

MISSED APPROACH:
Climb to 3500 direct
COGIV and hold.

AWOS-3 119,075	MINNEAPOLIS CENTER 124.4 317.7	UNICOM 122.8 (CTAF) 0
--------------------------	--	--



ELEV	1523		TDZE	1523
------	------	--	------	------



REIL Rwys 17 and 35 **L**
MIRL Rwys 17-35 and 9-27 **L**

[illegible]