

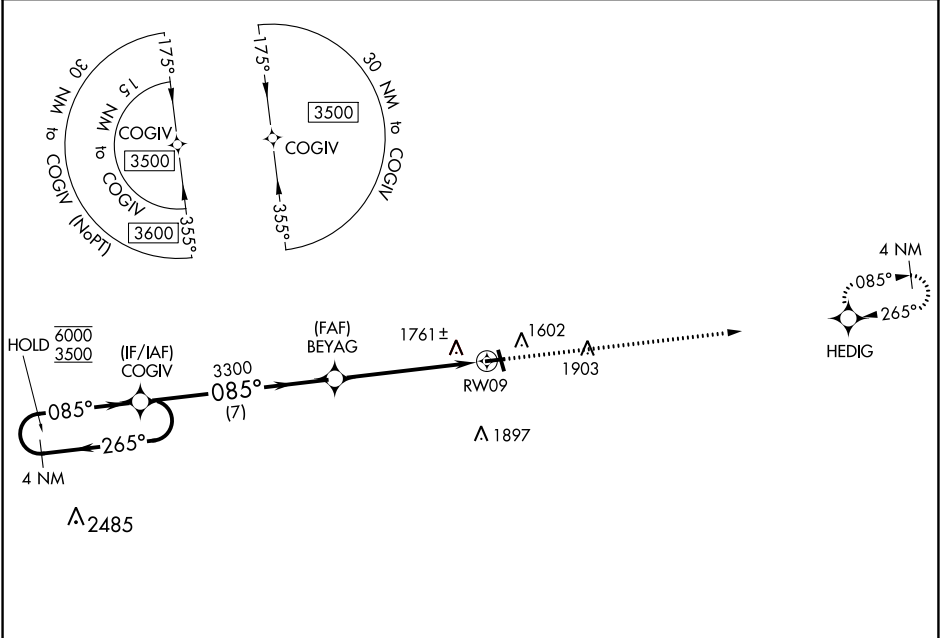


WAAS CH 82130 W09A	APP CRS 085°	Rwy Idg 3400 TDZE 1522 Apt Elev 1523
--	------------------------	---

RNAV (GPS) RWY 9
LANGLADE COUNTY (AIG)

RNP APCH.	MISSED APPROACH: Climb to 3400 direct HEDIG and hold.
 Rwy 9 helicopter visibility reduction below 3/4 SM NA.	
 For uncompensated Baro-VNAV systems, LNAV/VNAV NA below -18C or above 54°C.	

AWOS-3 119.075	MINNEAPOLIS CENTER 124.4 317.7	UNICOM 122.8 (CTAF) 0
--------------------------	--	---------------------------------



4 NM Holding Pattern		3400		HEDIG	
COGIV		BEYAG		*LNAV only.	
6000 ← 265°		3300		*1.6 NM to RW09	
3500 → 085°		3300		RW09	
GP 3.00°		3300		3400 X 75	
TCH 40		3300		3400 X 75	
7 NM		3.9 NM		1.6 NM	
CATEGORY	A	B	C	D	
LPV DA	1772-1		250 (300-1)		
LNAV/VNAV DA	2135-2 1/4		613 (700-2 1/4)		
LNAV MDA	2080-1 558 (600-1)		2080-1 5/8 558 (600-1 1/2)		
CIRCLING	2120-1 597 (600-1)		2260-2 737 (800-2)		
		2260-2 1/4 737 (800-2 1/4)		REIL Rwy 17 and 35 1	
				MIRL Rwy 17-35 and 9-27 1	

EC-3, 31 DEC 2020 to 28 JAN 2021

EC-3, 31 DEC 2020 to 28 JAN 2021