

WAAS  
CH **86230**  
**W26A**

APP CRS  
**261°**

Rwy Idg  
TDZE **836**  
Apt Elev **836**

**RNAV (GPS) RWY 26**

BLACK RIVER FALLS AREA (BCK)

**⚠**

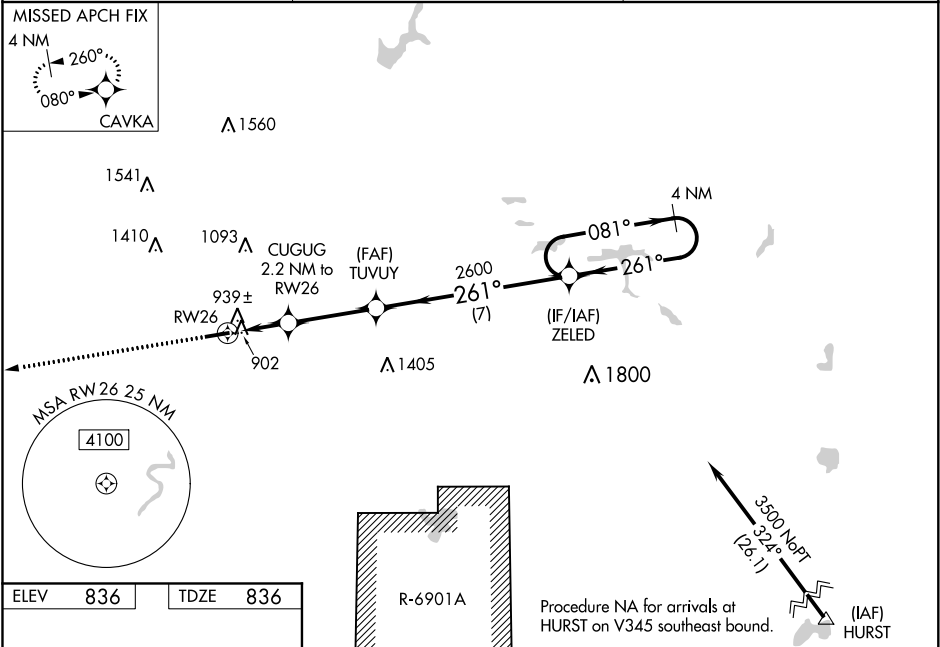
For uncompensated Baro-VNAV systems, LNAV/VNAV NA below -16°C (4°F) or above 38°C (100°F). Baro-VNAV and VDP NA when using La Crosse altimeter setting. Rwy 26 helicopter visibility reduction below 3⁄4 SM NA. DME/DME RNP-0.3 NA. When local altimeter setting not received, use La Crosse altimeter setting and increase all DA 91 feet and all MDA 100 feet and increase LPV all Cats visibility to 1 1⁄2 SM, LNAV/VNAV all Cats to 1 1⁄4 SM, LNAV Cat C/D to 1 3⁄8 SM, and Circling Cat C to 1 3⁄4 SM, and Cat D to 2 1⁄4 SM.

MISSED APPROACH:  
Climb to 3500 direct  
CAVKA and hold.

AWOS-3PT  
**119.125**

MINNEAPOLIS CENTER  
**128.6 363.0**

CTAF  
**122.9**



ELEV **836**

TDZE **836**

3500

CAVKA

VGSI and RNAV glidepath not coincident  
(VGSI Angle 3.50/TCH 27).

4 NM  
Holding Pattern

\*LNAV only.  
\*0.9 NM to RW26

CUGUG  
2.2 NM to RW26

TUVUY  
2600

261°

081°

261°

3500

GP 3.00°  
TCH 50

0.9 NM

1.3 NM

3.2 NM

7 NM

261° to RW26

261°

2600

1580

0.3% UP

4601 X 75

CATEGORY	A	B	C	D
LPV DA		1087-1	251 (300-1)	
LNAV/VNAV DA		1120-1	284 (300-1)	
LNAV MDA		1200-1	364 (400-1)	
CIRCLING	1240-1 404 (500-1)	1360-1 524 (600-1)	1380-1½ 544 (600-1½)	1460-2 624 (700-2)

REIL Rwy 8 and 26 **Ⓛ**  
MIRL Rwy 8-26 **Ⓛ**