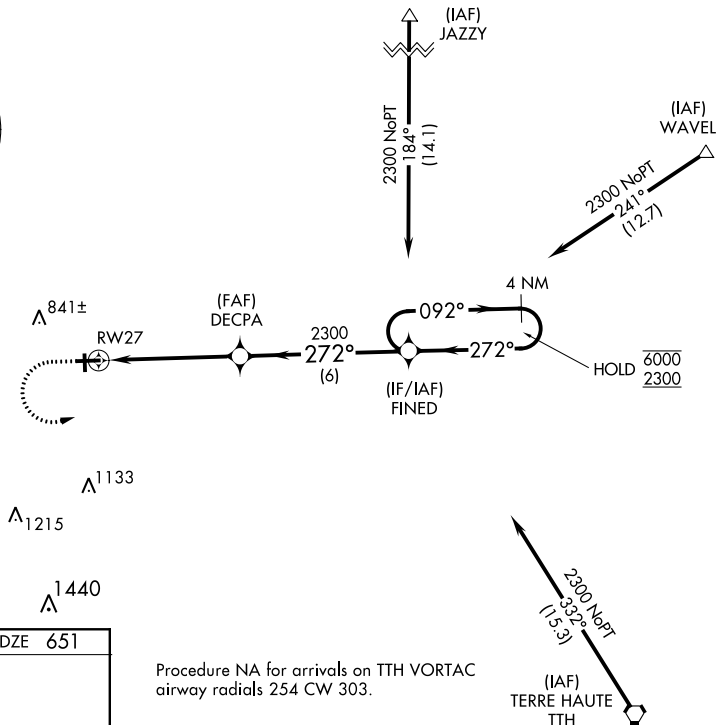
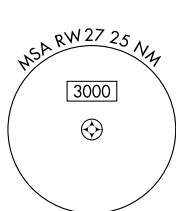

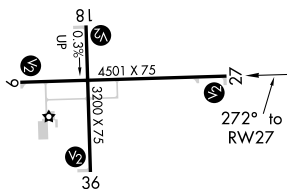


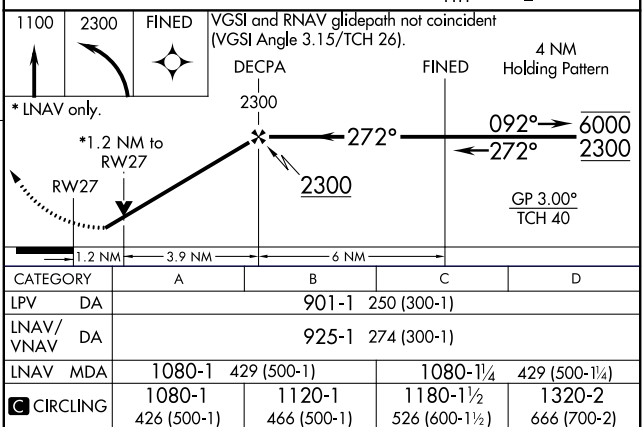
# RNAV (GPS) RWY 27

Circling Rwy 18 NA at night. For uncompensated Baro-VNAV systems, LNAV/VNAV NA below -16°C or above 54°C. Rwy 27 helicopter visibility reduction below  $\frac{3}{4}$  SM NA.

**MISSED APPROACH:**  
Climb to 1100 then  
climbing left turn to 2300  
direct **FINED** and hold.

UNICOM  
123.0 (CTAF) TDZE 651

Procedure NA for arrivals on TTH VORTAC  
airway radials 254 CW 303.



RNAV (GPS) RWY 27