

VORTAC TTH 115.3 Chn 100	APP CRS 301°	Rwy Idg TDZE Apt Elev	N/A N/A 654
--	------------------------	-----------------------------	--

VOR/DME-A
EDGAR COUNTY (PRG)

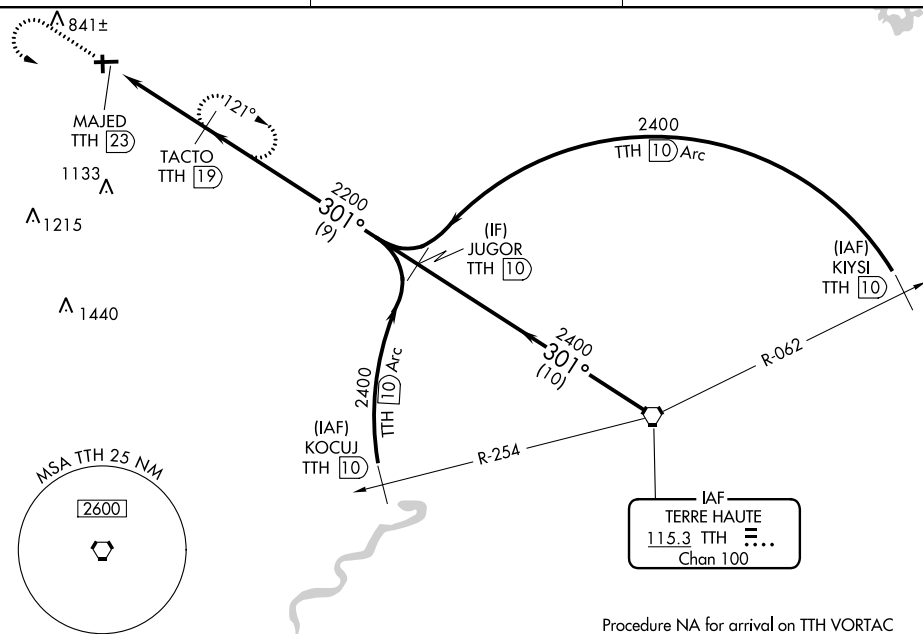
T When local altimeter setting not received, use Terre Haute Rgnl altimeter setting and increase all MDA 80 feet; increase Cat C visibility $\frac{1}{4}$ mile. Visibility reduction by helicopters NA.

MISSED APPROACH: Climb to 2200 then left turn heading 080° and TTH VORTAC R-301 to TACTO/TTH 19 DME and hold.

AWOS-3
124.175

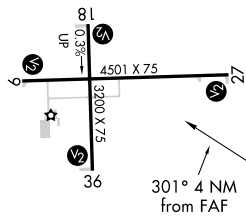
HULMAN APP CON
125.45 339.8

UNICOM
123.0 (CTAF) **L**



Procedure NA for arrival on TTH VORTAC
airway radials 280 CW 342.

ELEV 654



REIL Rwy 27

MIRL Rwy 9-27 and 18-36 **L**

Δ¹⁵⁴⁹

