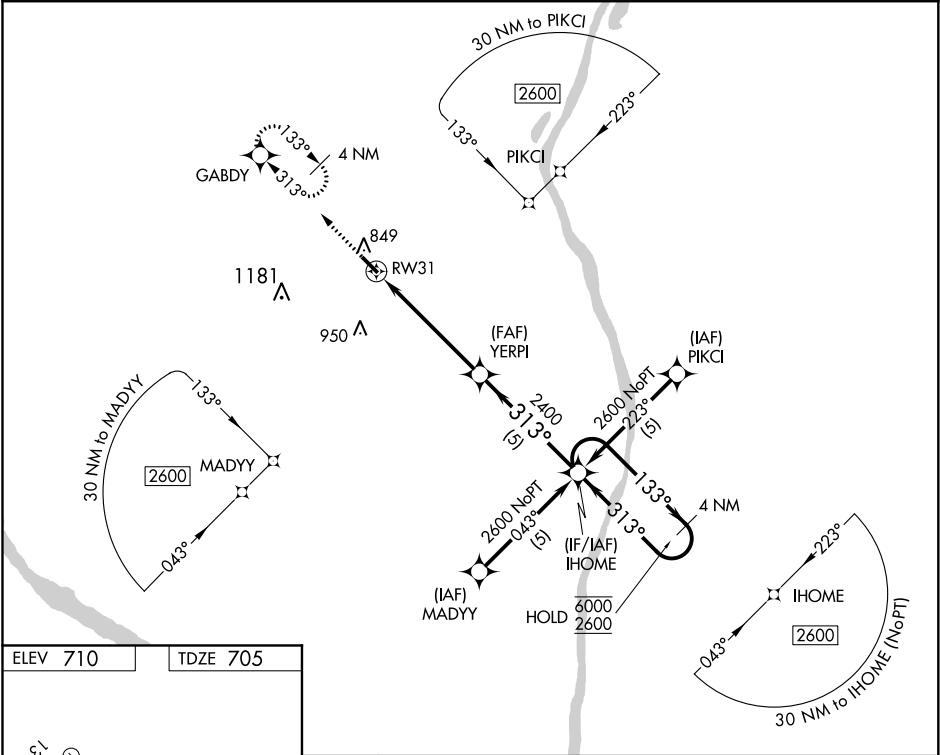


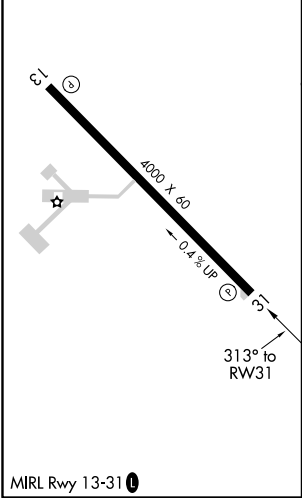
APP CRS	Rwy Idg	4000
313°	TDZE	705
	Apt Elev	710

RNAV (GPS) RWY 31
PITTSFIELD PENSTONE MUNI (PPQ)

RNP APCH. ▼ For uncompensated Baro-VNAV systems, LNAV/VNAV NA below -16°C or above 54°C.		MISSED APPROACH: Climb to 2600 direct GABDY and hold.
AWOS-3 118.525	KANSAS CITY CENTER 126.225 317.775	UNICOM 122.8 (CTAF) 0



ELEV 710	TDZE 705
----------	----------



2600 GABDY		VGSI and RNAV glidepath not coincident (VGSI Angle 3.00°/TCH 29).		4 NM Holding Pattern
* LNAV only.		IHOME		
RW31		YERPI 2400		
1.4 NM		3.8 NM		
5 NM		133° 6000		
		313° 2600		
		GP 3.00° TCH 40		
CATEGORY	A	B	C	D
LNAV/VNAV DA	970-1 265 (300-1)			NA
LNAV MDA	1160-1	455 (500-1)	1160-1 3/8 455 (500-1 3/8)	NA
CIRCLING	1160-1 450 (500-1)	1240-1 530 (600-1)	1340-1 3/4 630 (700-1 3/4)	NA