

WAAS
CH **63120**
W10A

APP CRS
094°

Rwy Idg
TDZE **840**
Apt Elev **840**

RNAV (GPS) RWY 10
WAUPACA MUNI (PCZ)

RNP APCH.

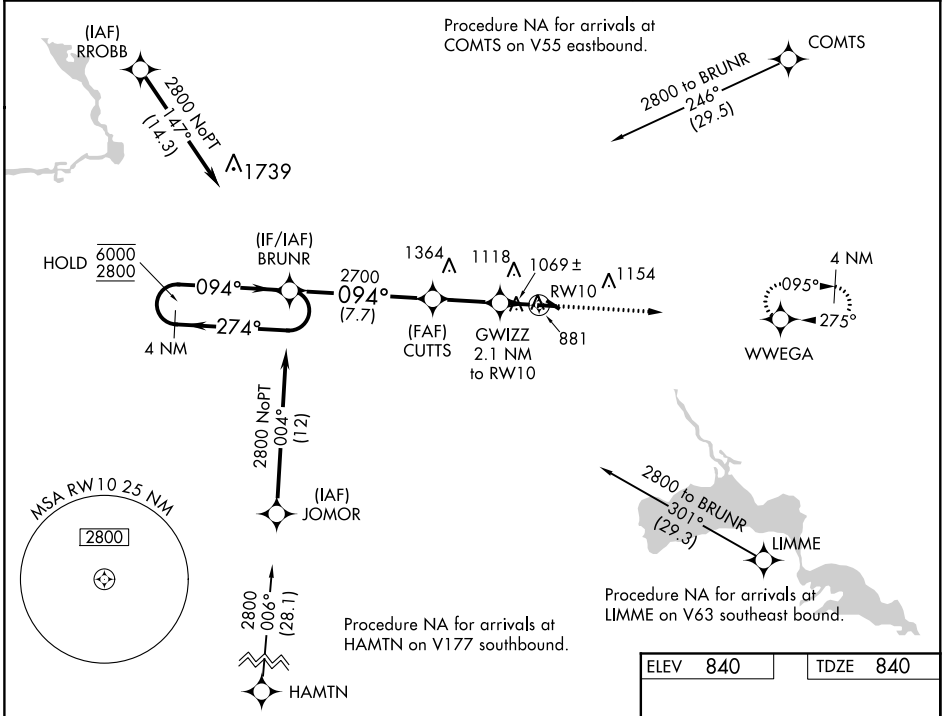
▼

▲

Circling to Rwy 28 NA at night. For uncompensated Baro-VNAV systems, LNAV/VNAV NA below -16°C or above 54°C.

MISSED APPROACH:
Climb to 2800 direct
WWEGA and hold.

AWOS-3 118.625	MINNEAPOLIS CENTER 124.4 317.7	UNICOM 122.8 (CTAF) 0
--------------------------	--	---------------------------------



4 NM Holding Pattern BRUNR		2800 WVEGA	
6000 ← 274° 2800 → 094°		CUTTS 2700 GWIZZ 2.1 NM to RW10 *1.6 NM to RW10 *1540	
GP 3.00° TCH 40		*LNAV only.	
7.7 NM		0.5 NM	
CATEGORY	A	B	C
LPV DA	1090-7/8	250 (300-7/8)	
LNAV/VNAV DA	1384-17/8	544 (600-17/8)	
LNAV MDA	1380-1	540 (600-1)	1380-1 1/2 540 (600-1 1/2)
CIRCLING	1380-1 540 (600-1)	1420-1 580 (600-1)	1420-1 1/2 580 (600-1 1/2) 1500-2 660 (700-2)