

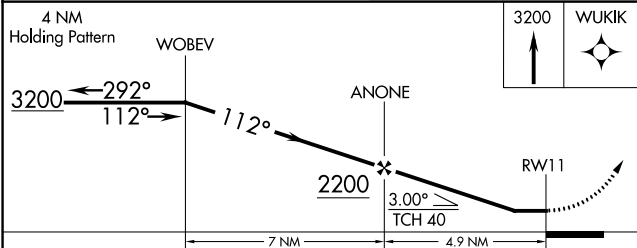
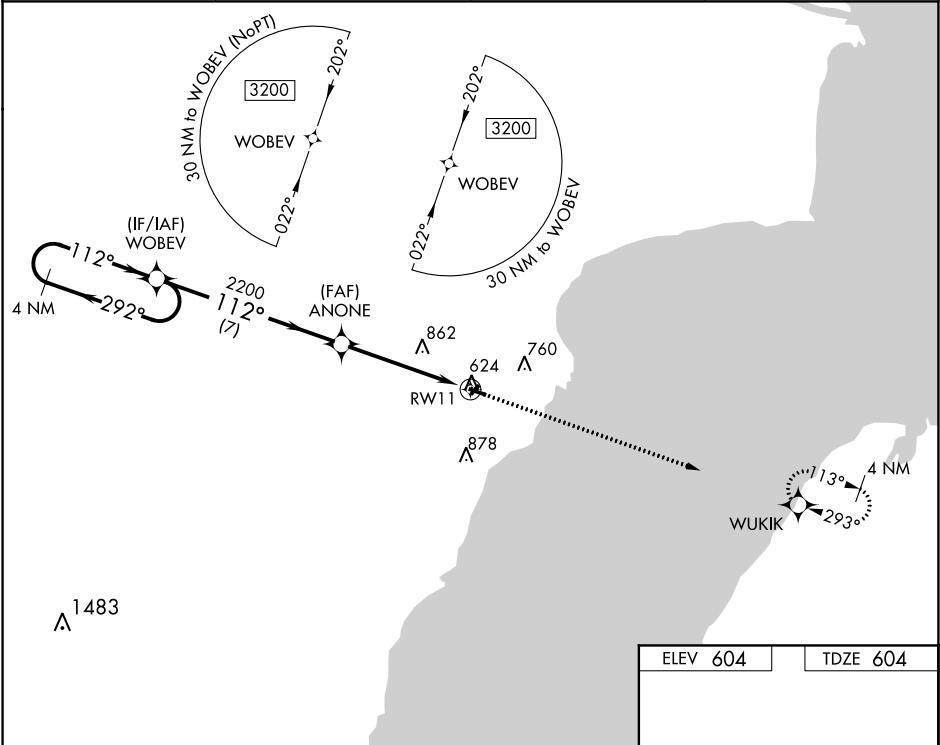
WAAS CH 99629 W11A	APP CRS 112°	Rwy Idg 3198 TDZE 604 Apt Elev 604
--	------------------------	---

RNAV (GPS) RWY 11

OCONTO-J DOUGLAS BAKE MUNI (OCQ)

<div><div>▼</div><div>▲ NA</div></div> <div>Use Menominee, MI altimeter setting; when not received, use Green Bay altimeter setting and increase all DA/MDA 40 feet; increase Circling Cat C visibility 1⁄8 mile. Procedure NA at night. DME/DME RNP-0.3 NA. Visibility reduction by helicopters NA.</div>	MISSED APPROACH: Climb to 3200 direct WUKIK and hold.
--	--

AWOS-3 120.925	MNM AWOS-3PT 109.6	GREEN BAY APP CON ★ 120.3 338.2	UNICOM 122.8 (CTAF) 0
--------------------------	------------------------------	---	---------------------------------



ELEV 604	TDZE 604
<div>REIL Rwy 11 and 29 MIRL Rwy 11-29 0</div>	