

WAAS CH 82330 W29A	APP CRS 291°	Rwy Idg TDZE 1164 Apt Elev 1171	5001
--	------------------------	---	-------------

RNAV (GPS) RWY 29

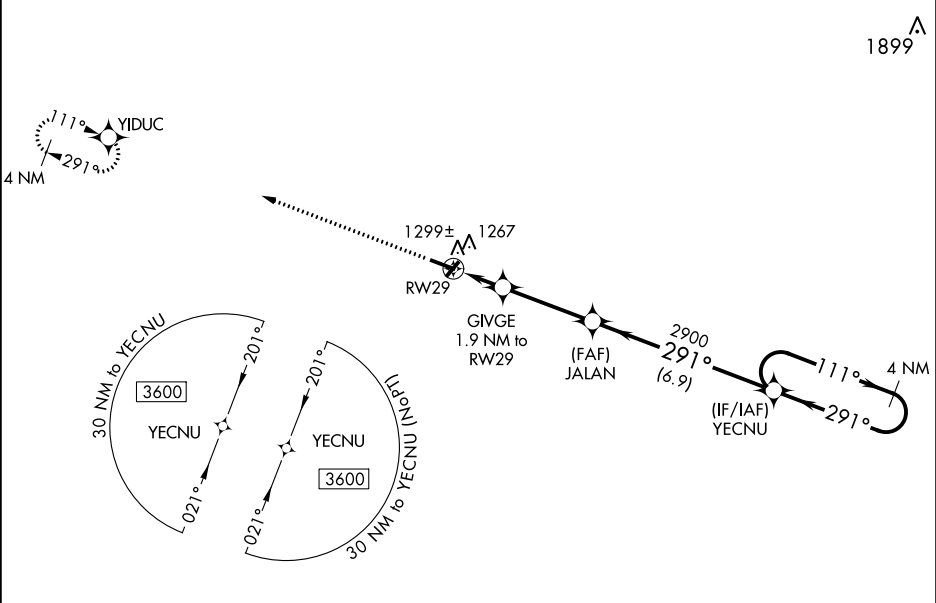
IOWA COUNTY (MRJ)

⚠

Baro-VNAV NA when using Platteville altimeter setting. For uncompensated Baro-VNAV systems, LNAV/VNAV NA below -17°C (2°F) or above 54°C (130°F). When local altimeter setting not received, use Platteville altimeter setting and increase all DA 55 feet, increase LPV all Cats visibility ⅓ mile and LNAV/VNAV all Cats visibility ¼ mile, increase all MDA 60 feet and LNAV Cat C visibility ¼ mile. DME/DME RNP-0.3 NA.

MISSED APPROACH:
Climb to 3500 direct YIDUC and hold.

AWOS-3 118.525	CHICAGO CENTER 133.95 281.4	UNICOM 122.8 (CTAF) 0
--------------------------	---------------------------------------	--



ELEV 1171	TDZE 1164
------------------	------------------

3500

YIDUC

VGSI and RNAV glidepath not coincident (VGSI Angle 3.00/TCH 54).

4 NM Holding Pattern

* LNAV only

GIVE 1.9 NM to RW29

JALAN 2900

YECNU

111° → 3600

← 291°

GP 3.00° TCH 40

REIL Rwy 11 and 29

MIRL Rwy 4-22 and 11-29

CATEGORY	A	B	C	D
LPV DA	1414-7/8	250 (300-7/8)		NA
LNAV/VNAV DA	1469-1	305 (300-1)		NA
LNAV MDA	1580-1	416 (500-1)	1580-1 1/8 416 (500-1 1/8)	NA
CIRCLING	1620-1 449 (500-1)	1640-1 469 (500-1)	1640-1 1/2 469 (500-1 1/2)	NA