

APP CRS	Rwy Idg	3400
277°	TDZE	1237
	Apt Elev	1238

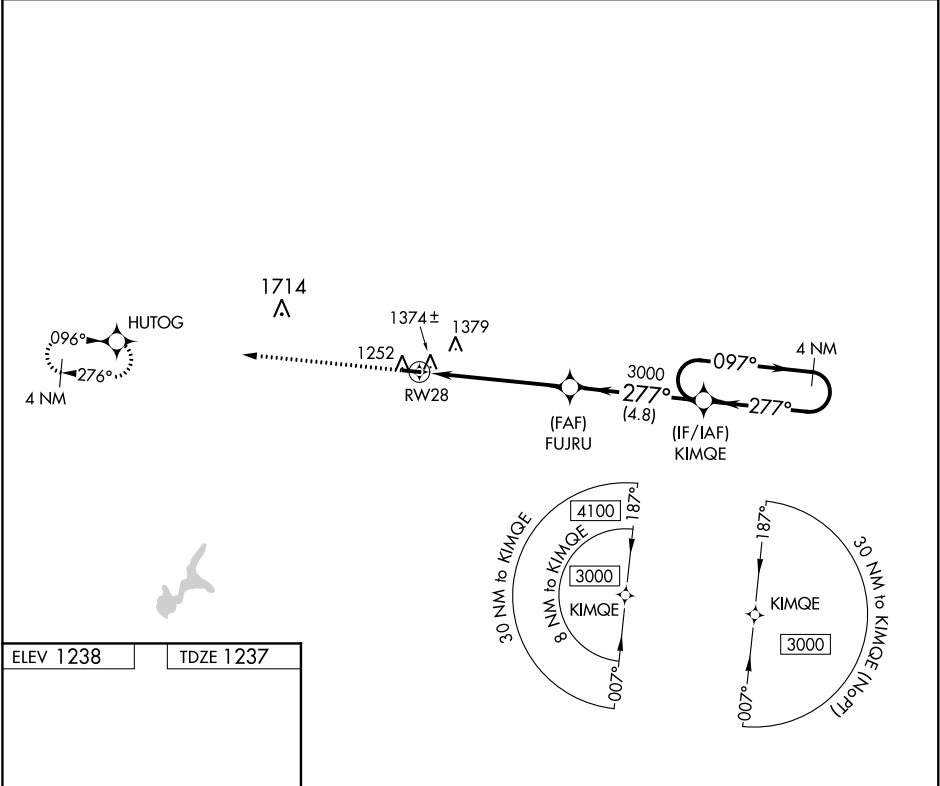
RNAV (GPS) RWY 28
NEILLSVILLE MUNI(VIQ)

RNP APCH.

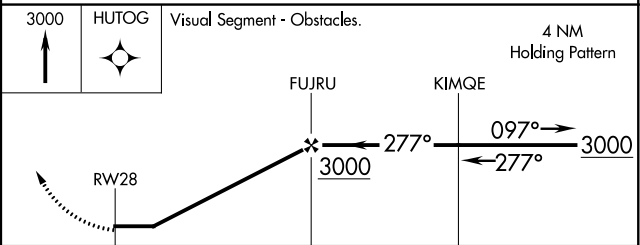
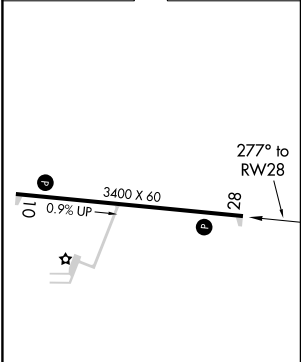
Rwy 28 helicopter visibility reduction below 3/4 SM NA. Use Marshfield altimeter setting; when not received, use Wisconsin Rapids altimeter setting and increase all MDA 80 feet.

MISSED APPROACH:
Climb to 3000 direct
HUTOG and hold.

MFI ASOS 121.575	MINNEAPOLIS CENTER 124.4 317.7	UNICOM 122.8 (CTAF)
---------------------	-----------------------------------	------------------------



ELEV 1238	TDZE 1237
-----------	-----------



CATEGORY	A	B	C	D
LNAV MDA	1680-1	443 (500-1)	NA	
CIRCLING	1720-1	482 (500-1)	NA	