

APP CRS	Rwy Idg	4001
359°	TDZE	622
	Apt Elev	622

RNAV (GPS) RWY 36

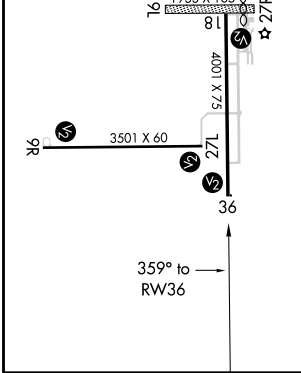
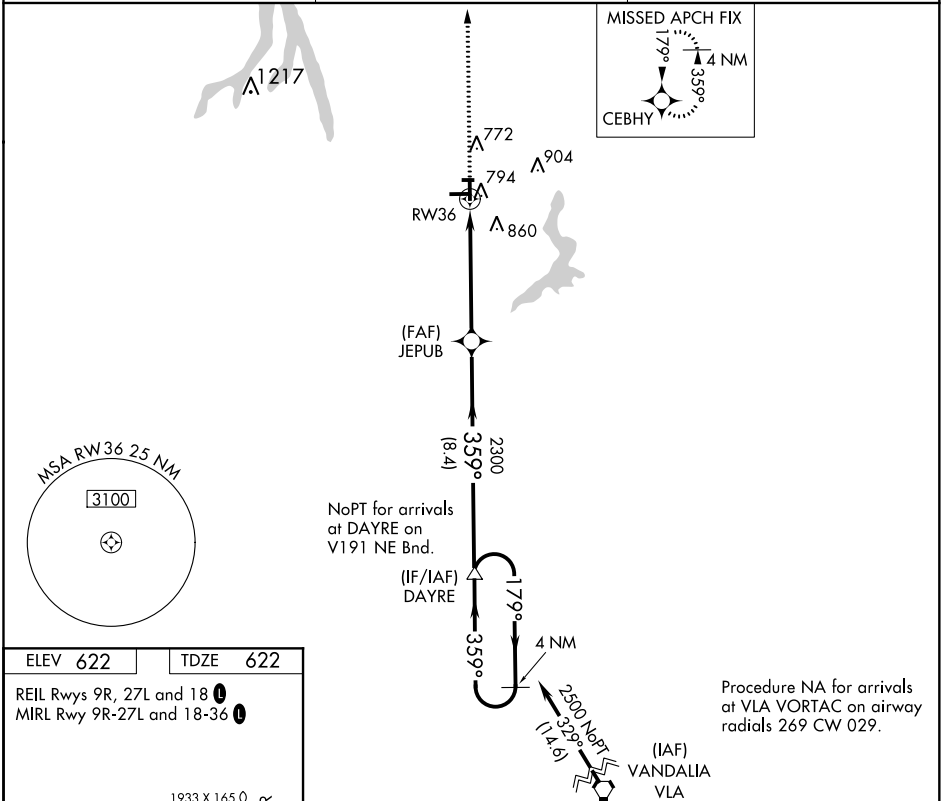
TAYLORVILLE MUNI (TAZ)

**⚠** If local altimeter setting not received, use Springfield altimeter setting and increase all MDAs 80 feet. When VGSI inop, circling Rwy 18 NA at night.

**⚠** DME/DME RNP-0.3 NA. LNAV MDA minimums NA at night.

MISSED APPROACH: Climb to 2300 direct CEBHY and hold.

AWOS-3 123.875 395.0	SPRINGFIELD APP CON ★ 126.15 323.0	UNICOM 122.8 (CTAF) 0
-------------------------	---------------------------------------	--------------------------



<div>2300</div> <div>↑</div>		<div>CEBHY</div> <div></div>		<div>DAYRE</div> <div>4 NM Holding Pattern</div>	
<div>RW36</div> <div></div>		<div>JEPUB</div> <div>2300</div>		<div>2500</div>	
<div>5.1 NM</div>		<div>8.4 NM</div>			
CATEGORY	A		B	C	D
LNAV MDA	1100-1 478 (500-1)		1100-1¼ 478 (500-1¼)		NA
CIRCLING	1160-1 538 (600-1)		1160-1½ 538 (600-1½)		NA

EC-3, 31 DEC 2020 to 28 JAN 2021

EC-3, 31 DEC 2020 to 28 JAN 2021