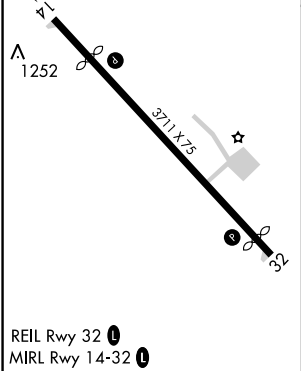
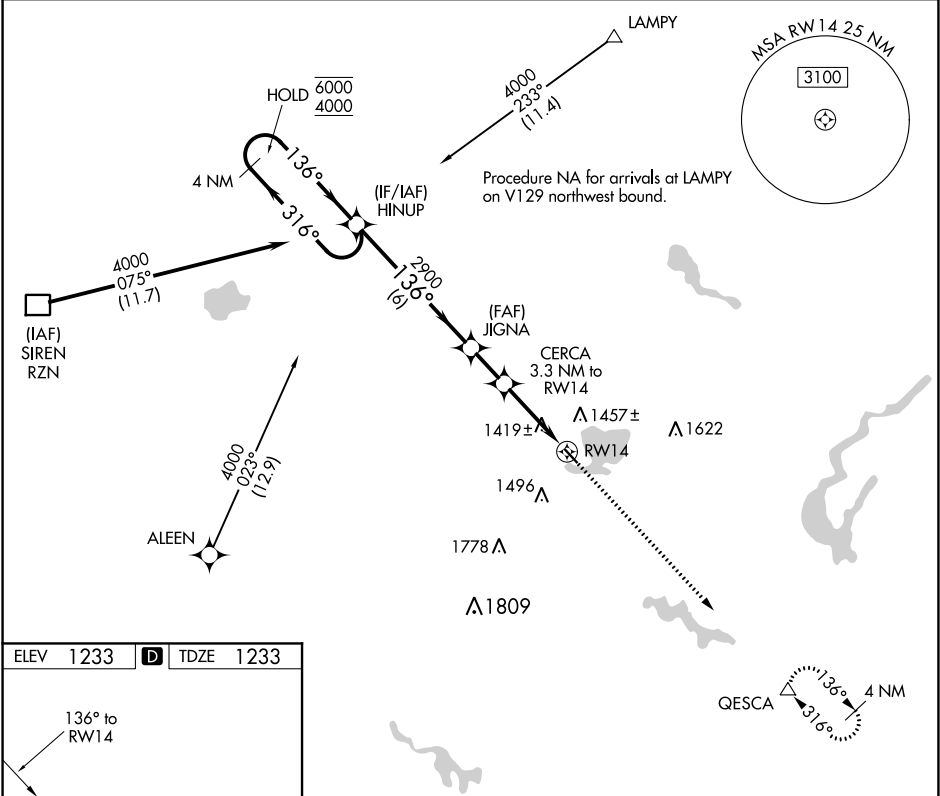


APP CRS	Rwy Idg	2881
136°	TDZE	1233
	Apt Elev	1233

RNAV (GPS) RWY 14

SHELL LAKE MUNI (SSQ)

RNP APCH.		MISSED APPROACH: Climb to 4000 direct QESCA and hold.
Procedure NA at night. Rwy 14 helicopter visibility reduction below 1 SM NA. Use Cumberland altimeter setting.		
UBE AWOS-3PT 119.175	MINNEAPOLIS CENTER 126.45 276.4	UNICOM 122.8 (CTAF) 0



4 NM Holding Pattern		VGSI and descent angles not coincident (VGSI Angle 4.00/TCH 22).	4000	QESCA
6000 ← 316°		316°	↑	△
4000		136°		
		JIGNA		
		2900		
		3.04° TCH 40		
		2320		
		CERCA 3.3 NM to RW14		
		RW14		
		6 NM	1.7 NM	3.3 NM
CATEGORY	A	B	C	D
LNAV MDA	1740-1	507 (600-1)	1740-1½	507 (600-1½)
CIRCLING	1840-1	607 (700-1)	1840-1¾	1860-2
			607 (700-1¾)	627 (700-2)

EC-3, 31 DEC 2020 to 28 JAN 2021

EC-3, 31 DEC 2020 to 28 JAN 2021