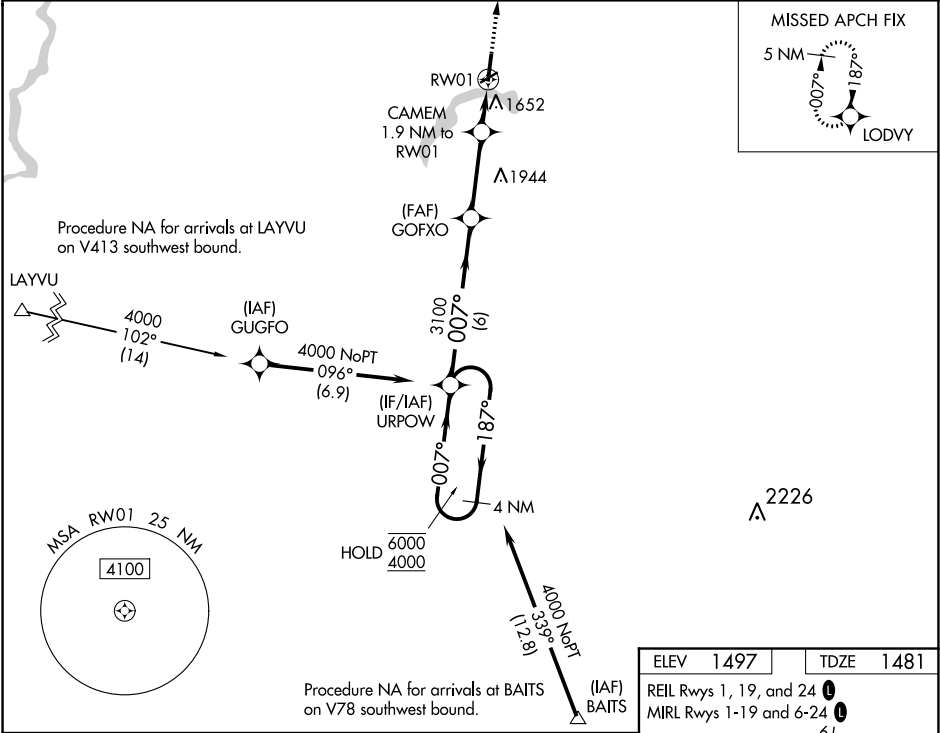


WAAS CH <b>56305</b> <b>W01A</b>	APP CRS <b>007°</b>	Rwy Idg TDZE <b>1481</b> Apt Elev <b>1497</b>
--	------------------------	---

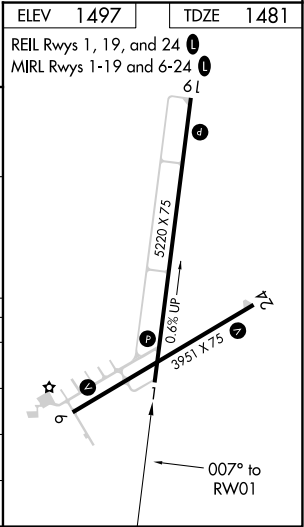
RNAV (GPS) RWY 1  
PRICE COUNTY (PBH)

RNP APCH.	MISSED APPROACH: Climb to 4100 direct LODVY and hold.
Circling Rwy 6, 24 NA at night. Rwy 1 helicopter visibility reduction below ¾ SM NA. For uncompensated Baro-VNAV systems, LNAV/VNAV NA below -17°C or above 54°C.	

AWOS-3 <b>125.875</b>	MINNEAPOLIS CENTER <b>133.65 281.5</b>	UNICOM <b>122.8 (CTAF) 0</b>
--------------------------	---	---------------------------------



4 NM Holding Pattern		URPOW		4100 LODVY	
6000 ← 187°		007° →		3100	
4000		007°		*2100	
GP 3.00°		TCH 41		*1.3 NM to RW01	
6 NM		3.1 NM		0.6 NM	
3.1 NM		0.6 NM		1.3 NM	
CATEGORY	A	B	C	D	
LPV DA	1731-1 250 (300-1)				
LNAV/VNAV DA	1813-1½ 332 (400-1½)				
LNAV MDA	1920-1 439 (500-1)		1920-1¼ 439 (500-1¼)		
CIRCLING	1960-1 463 (500-1)		2000-1½ 503 (600-1½)		2260-2½ 763 (800-2½)



EC-3, 31 DEC 2020 to 28 JAN 2021

EC-3, 31 DEC 2020 to 28 JAN 2021