

|  |                        |                             |   |
|--|------------------------|-----------------------------|---|
| WAAS<br>CH <b>53726</b><br><b>W24A</b> | APP CRS<br><b>239°</b> | Rwy Idg<br>TDZE<br>Apt Elev | <b>3951</b><br><b>1472</b><br><b>1497</b> |
|--|------------------------|-----------------------------|---|

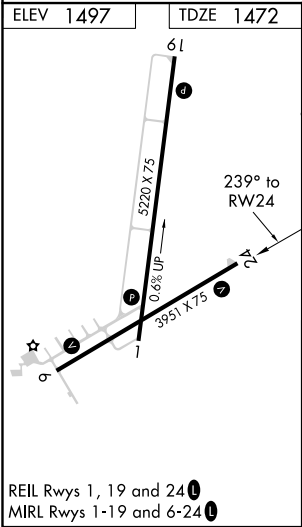
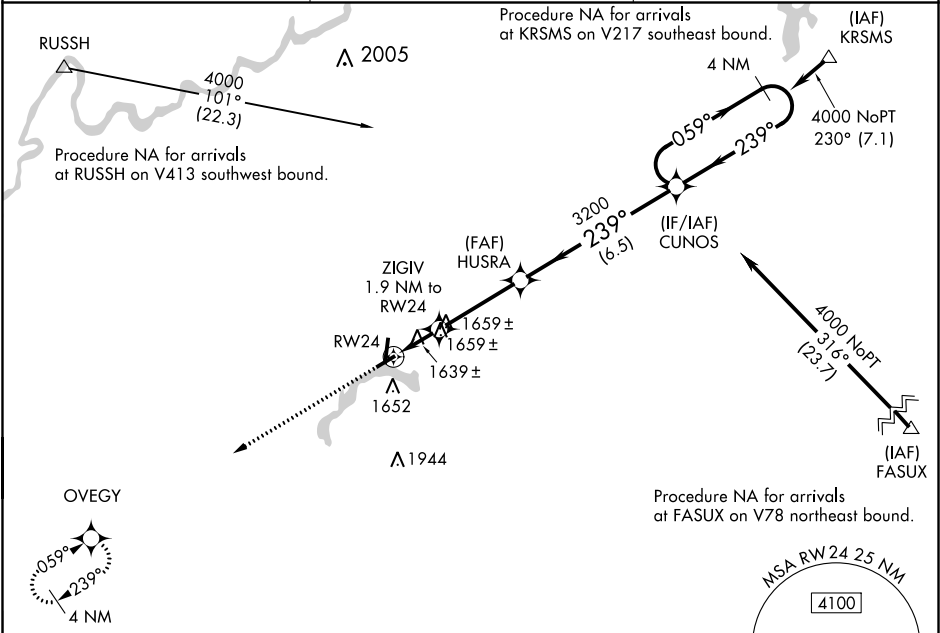
RNAV (GPS) RWY 24

PRICE COUNTY (PBH)

DME/DME RNP-0.3 NA. Visibility reduction below 1 SM NA. When local altimeter setting not received, use Minocqua-Woodruff altimeter setting and increase all MDA 100 feet and all Cats C and D visibility ¼ mile. Straight-in Rwy 24 NA at night, Circling Rwy 6, 24 NA at night.

MISSED APPROACH:  
Climb to 4200 direct OVEGY and hold.

|                          |   |                                 |
|--------------------------|---|---------------------------------|
| AWOS-3<br><b>125.875</b> | MINNEAPOLIS CENTER<br><b>133.65 281.5</b> | UNICOM<br><b>122.8 (CTAF) 0</b> |
|--------------------------|---|---------------------------------|



4200

OVEGY

4 NM Holding Pattern

ZIGIV

1.9 NM to RW24

2120

HUSRA

3200

3.00°

TCH 45°

CUNOS

4000

059°

239°

239°

1.9 NM

3.4 NM

6.5 NM

| CATEGORY | A      | B           | C                       | D                     |
|----------|--------|-------------|-------------------------|-----------------------|
| LP MDA   | 1900-1 | 428 (500-1) | 1900-1¼                 | 428 (500-1¼)          |
| LNAV MDA | 1920-1 | 448 (500-1) | 1920-1⅓                 | 448 (500-1⅓)          |
| CIRCLING | 2100-1 | 603 (700-1) | 2100-1¾<br>603 (700-1¾) | 2100-2<br>603 (700-2) |