

NDB RCX

356

APP CRS

330°

Rwy Idg

4001

TDZE

1233

Apt Elev

1240

NDB RWY 32

RUSK COUNTY (RCX)

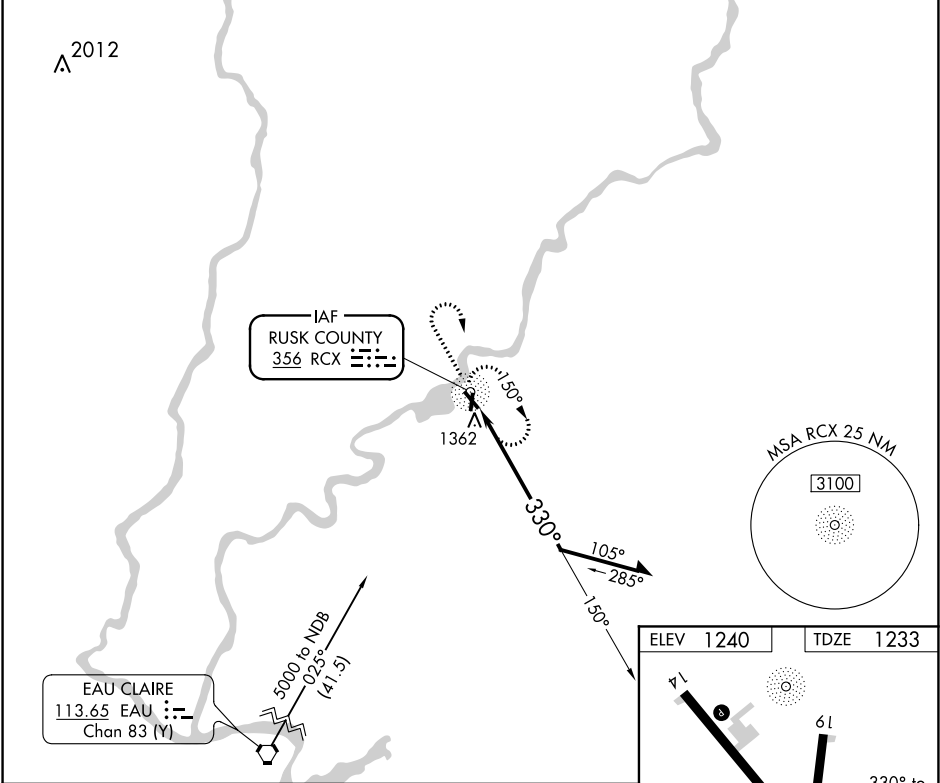
▼

▲

When local altimeter setting not received, use Rice Lake altimeter setting and increase all MDA 100 feet. Procedure NA at night. Rwy 32 helicopter visibility reduction below 1 SM NA.

MISSED APPROACH: Climb to 3000 then climbing right turn to 5000 direct RCX NDB and hold, continue climb-in-hold to 5000.

AWOS-3 118.125	MINNEAPOLIS CENTER 133.65 281.5	UNICOM 122.8 (CTAF) 0
-------------------	------------------------------------	--------------------------



3000

5000

RCX

5000

RCX NDB

Remain within 10 NM

150°

3000

330°

CATEGORY	A	B	C	D
S-32	1820-1	587 (600-1)	NA	
CIRCLING	1820-1	580 (600-1)	NA	

ELEV 1240

TDZE 1233

41

61

32

1

4001 X 75

3199 X 75

0.5% Up

330° to RCX NDB

REIL Rws 14 and 32 0

MIRL Rws 14-32 and 1-19 0